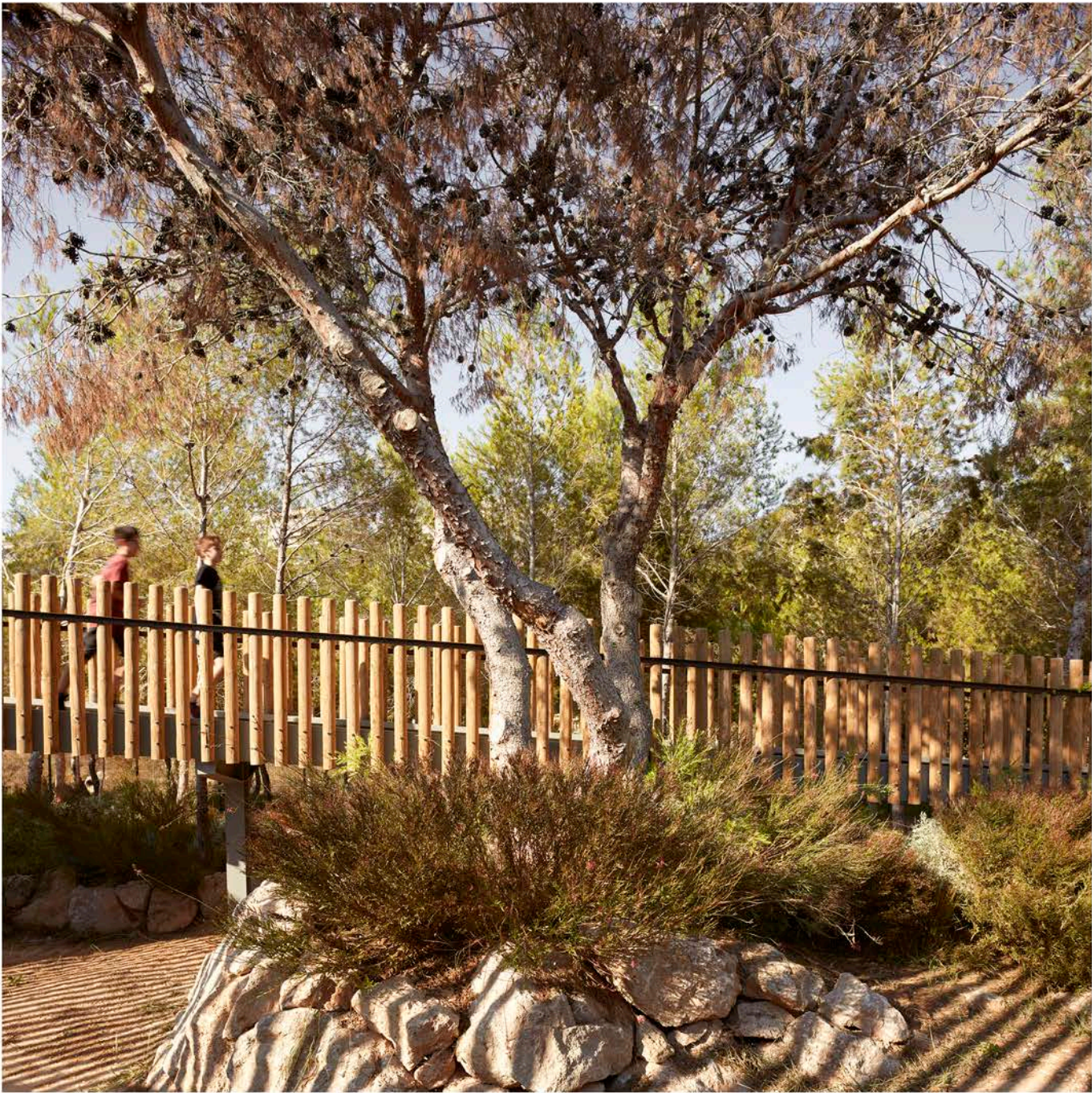




**MATERIAL DIDÁCTICO· COLEGIO IMAGINE MONTESSORI SCHOOL**  
Carmel Gradolí y Arturo Sanz 24 de noviembre de 2021

























































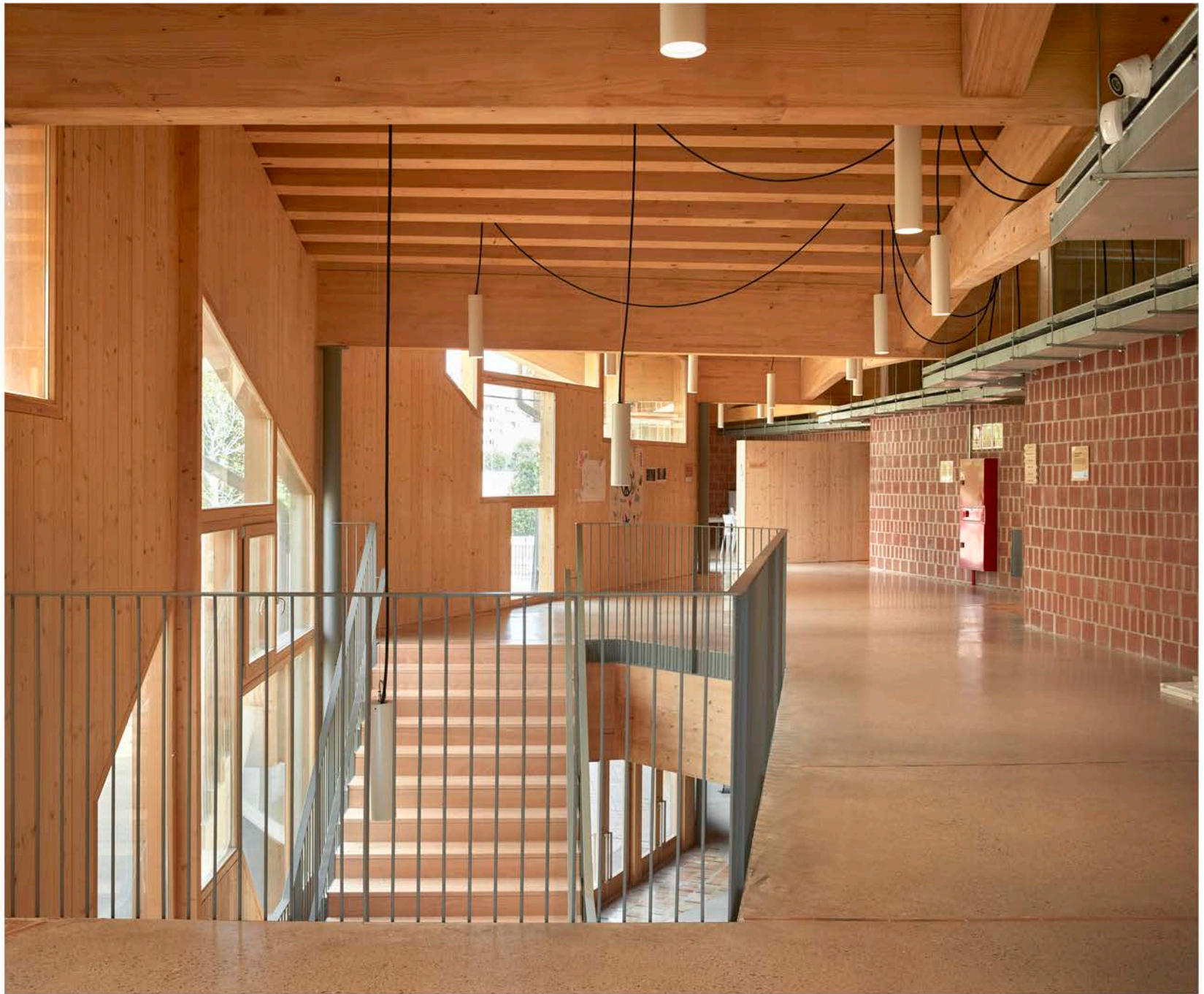




















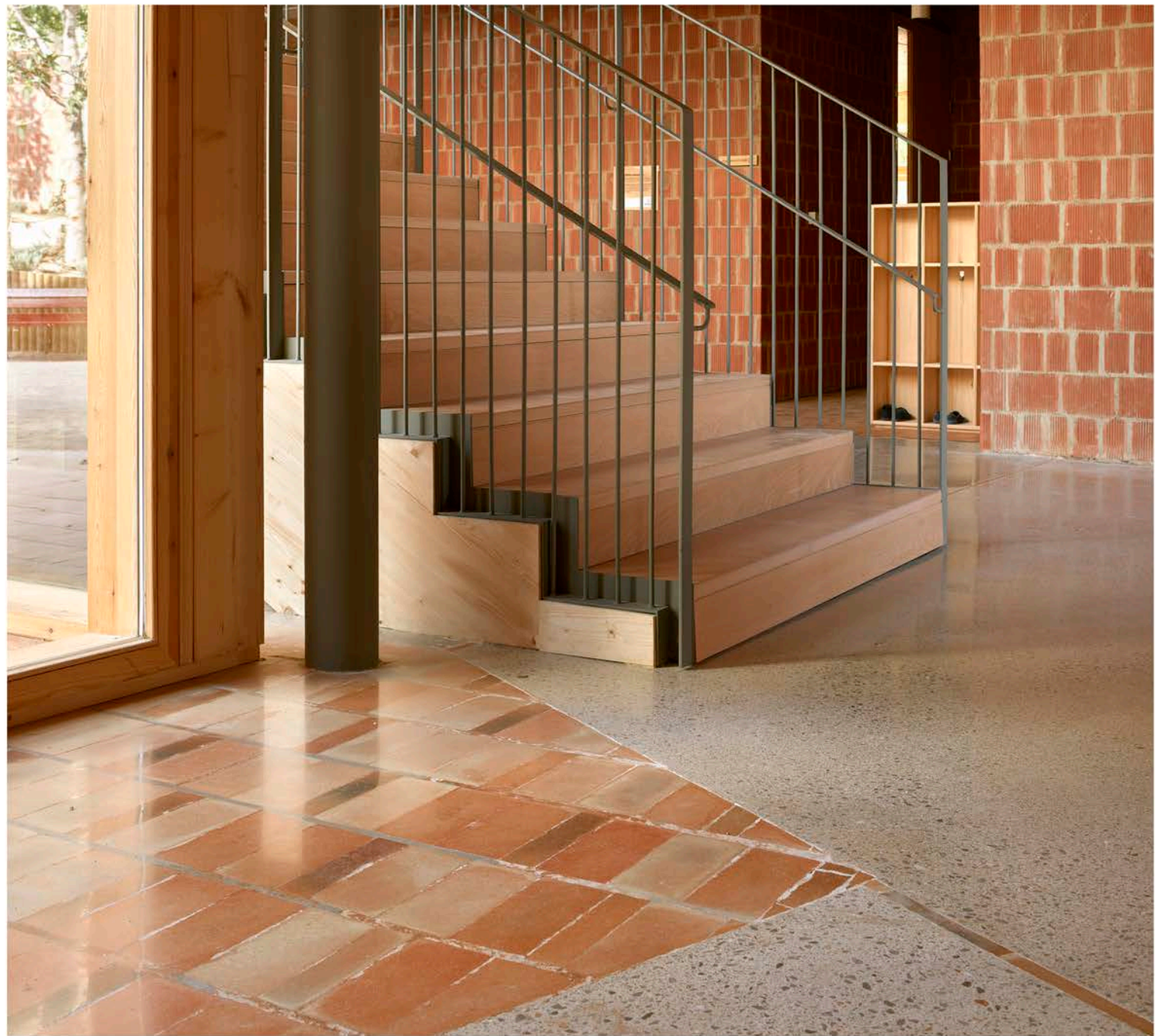




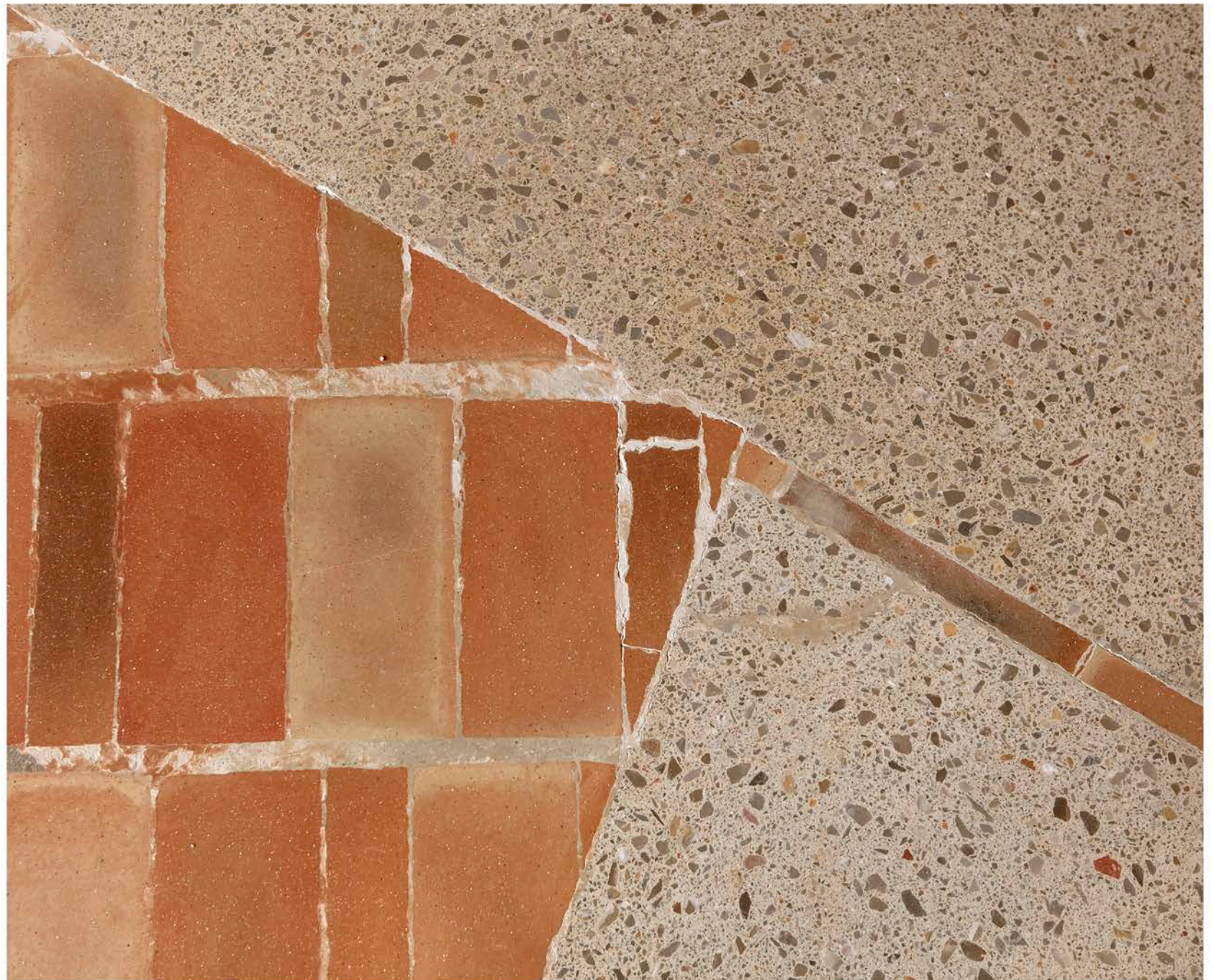










































































**EL LUGAR**



# EL LUGAR

**“La ligera paloma, que siente la resistencia del aire que surca al volar libremente, podría imaginarse que volaría mucho mejor aún en un espacio vacío”**

**Immanuel Kant (1724-1804). Crítica de la razón pura (introducción)**







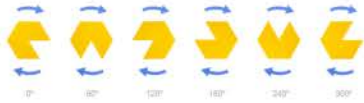




# InNature

"When children come into contact with nature, they reveal the strength"

M. Montessori. The Discovery of the child. 1900



POSIBILIDADES DE LA ALA



PROGRESION DE ESPACIOS / ZONAS COMUNES / ALA / EXTERIOR



EVOLUCION DE LA AGUPUNCIÓN / HEFISTO DEL ANECLADO EXTERIOR



IMAGEN



SECCION ALA PRIVATE: 1/100



Montessori Primary School. Del. 1988 / Herman Heitzinger



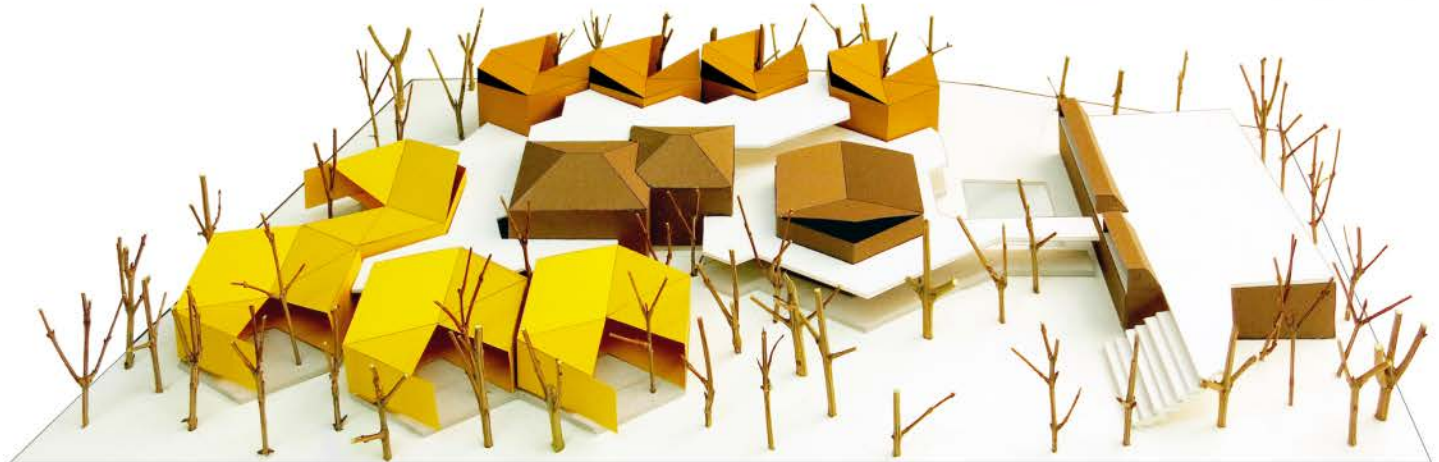
Gieseler School / Leven. 1981 / Peter Schreier



PLANO ALA PRIVATE: 1/100



OBJETIVO



VISTA GENERAL DEL CONJUNTO







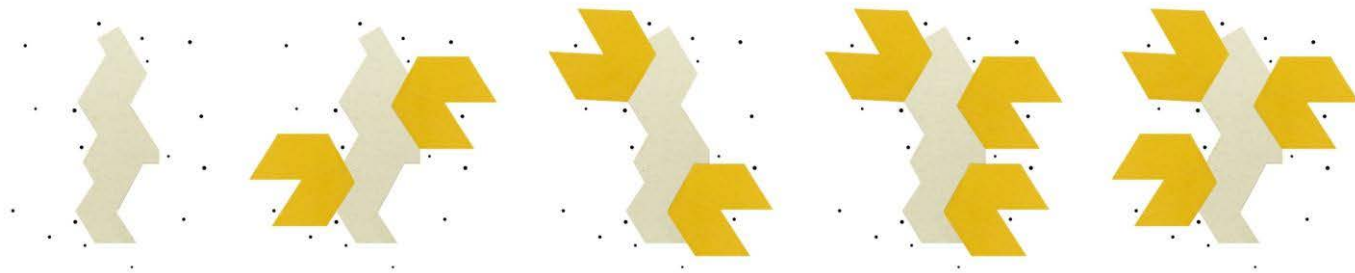
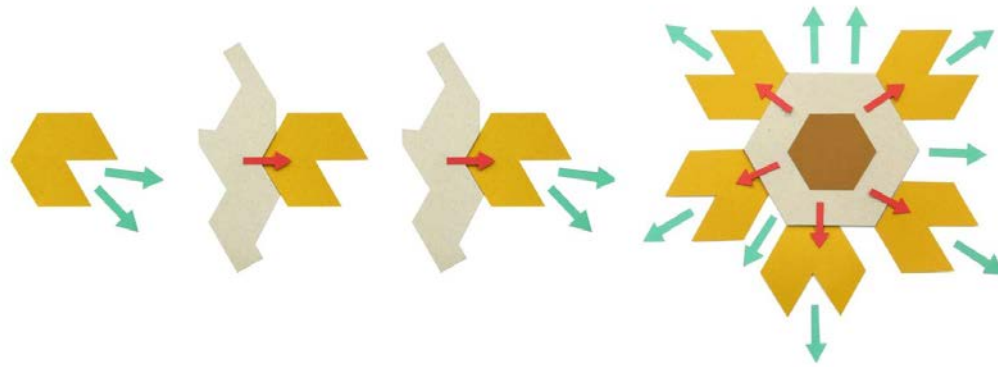
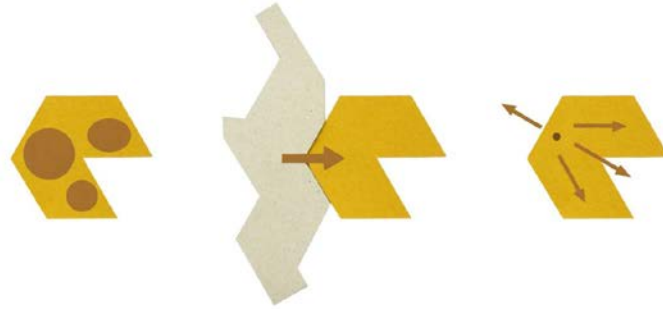
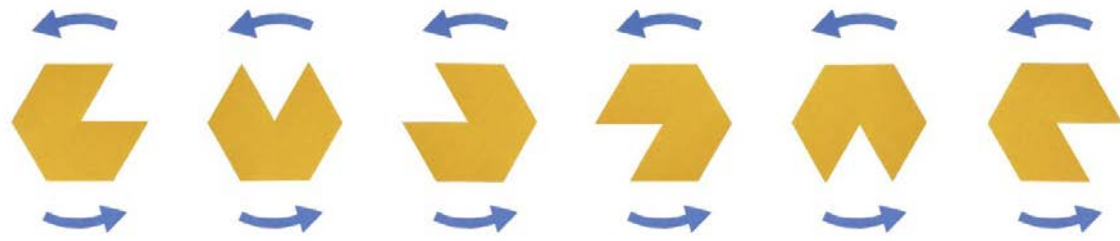




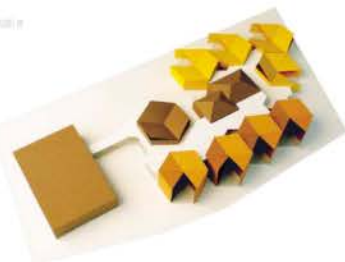
FIG. I



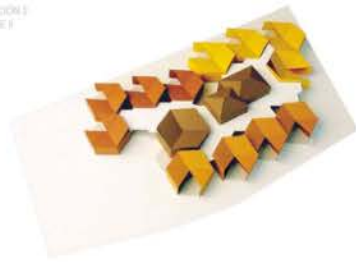
OPCIÓN 1  
FASE I



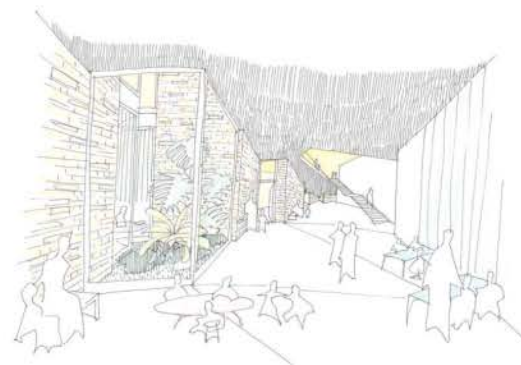
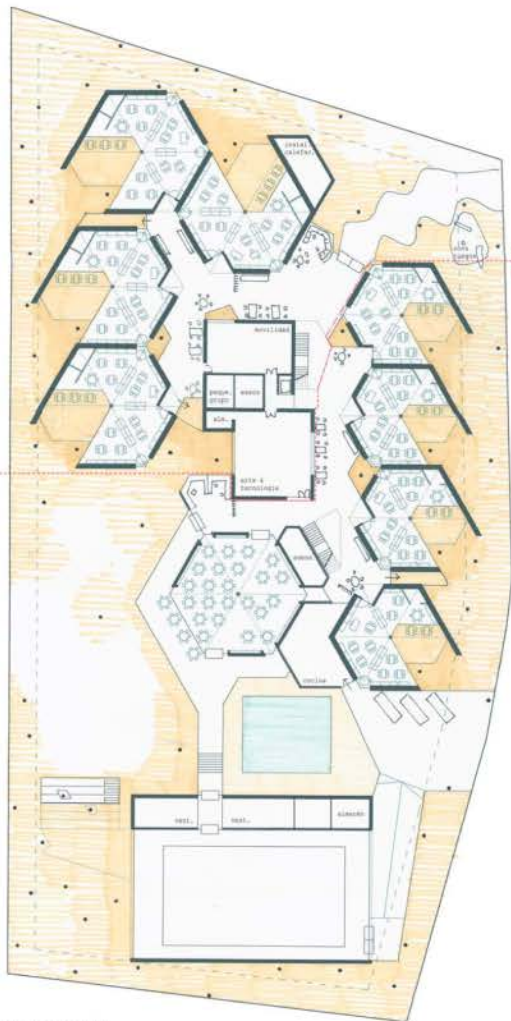
FIG. II



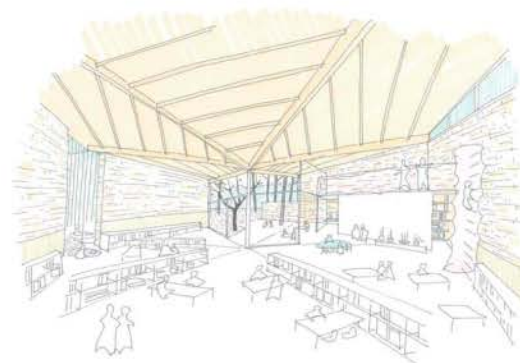
OPCIÓN 2  
FASE I



FASE II



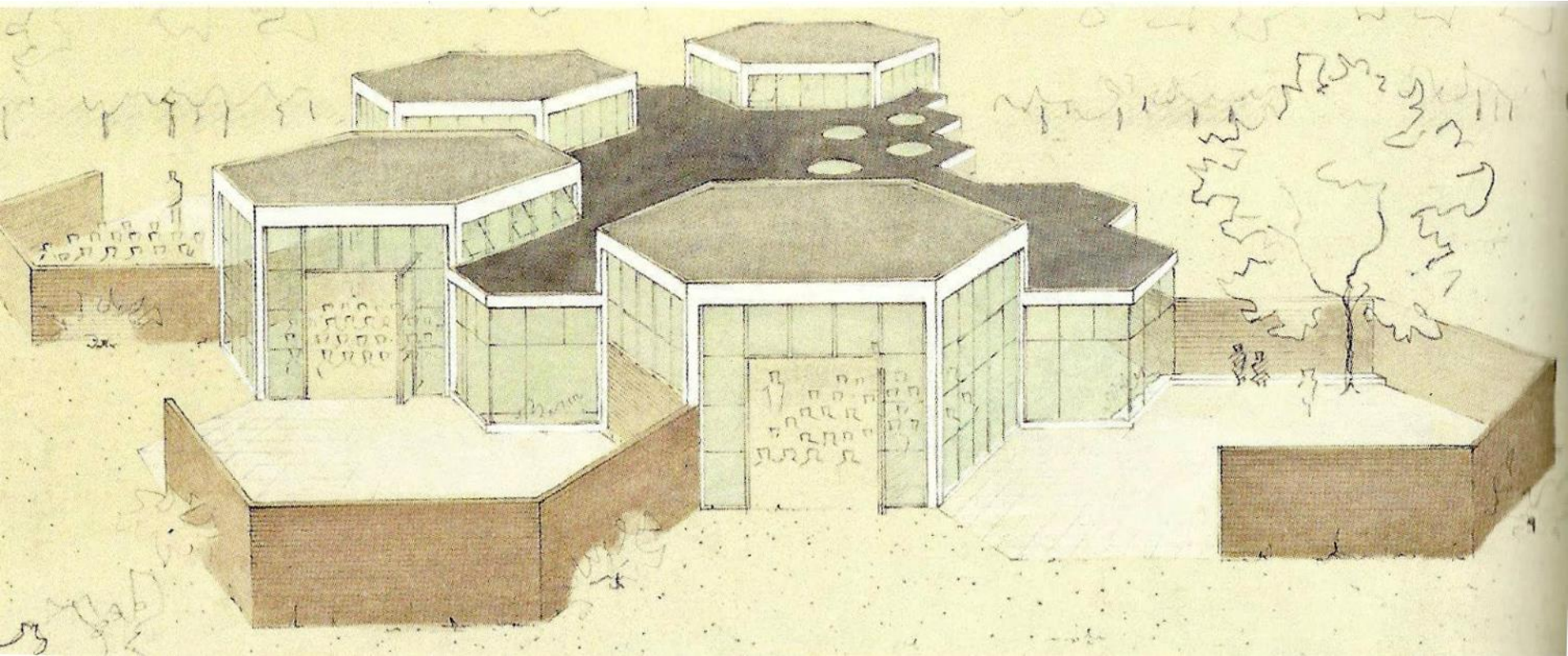
VISTA INTERIOR ESPACIOS COMUNES



VISTA INTERIOR ALJA

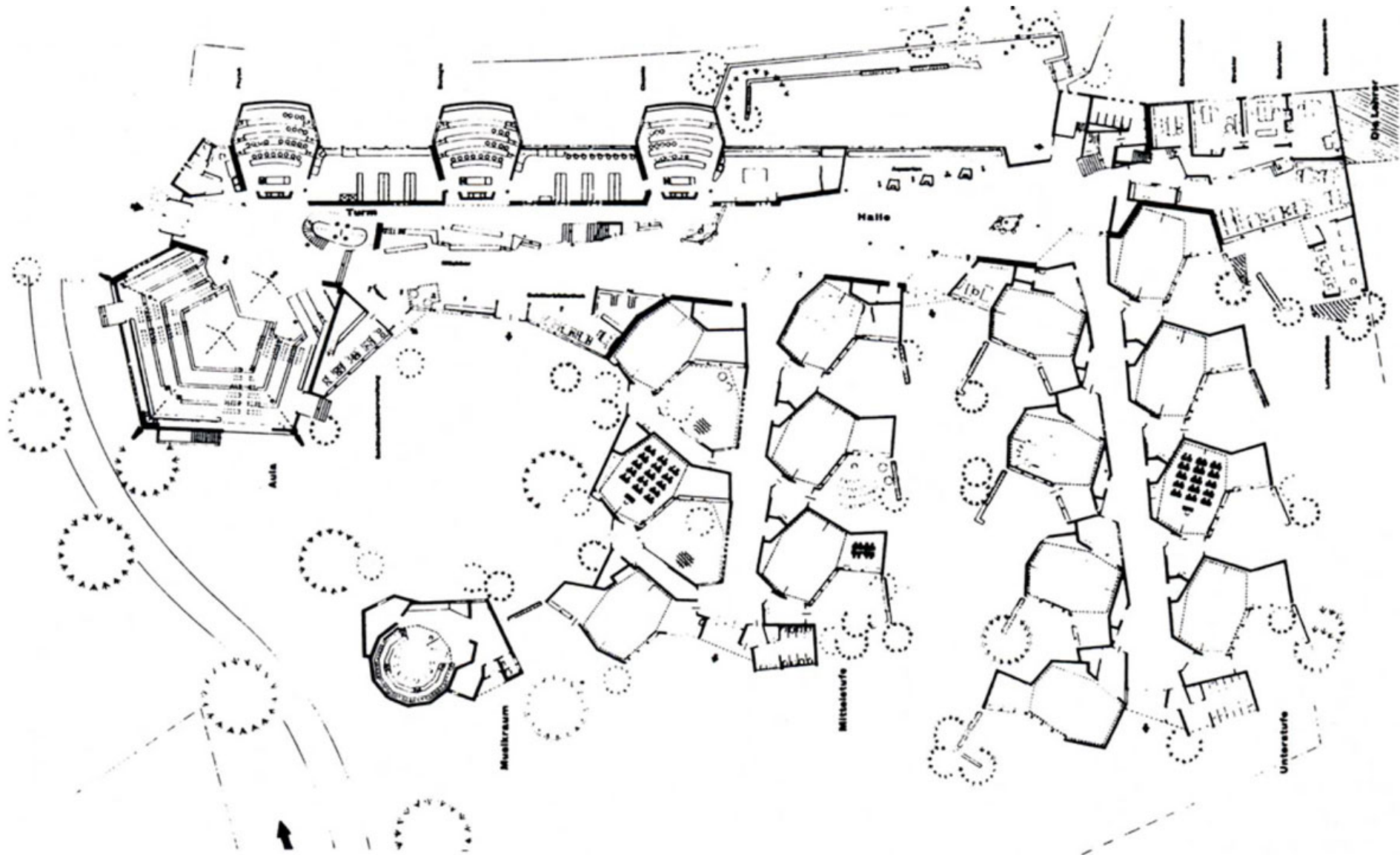


Aldo Van Eyck. Escuela infantil. 1956



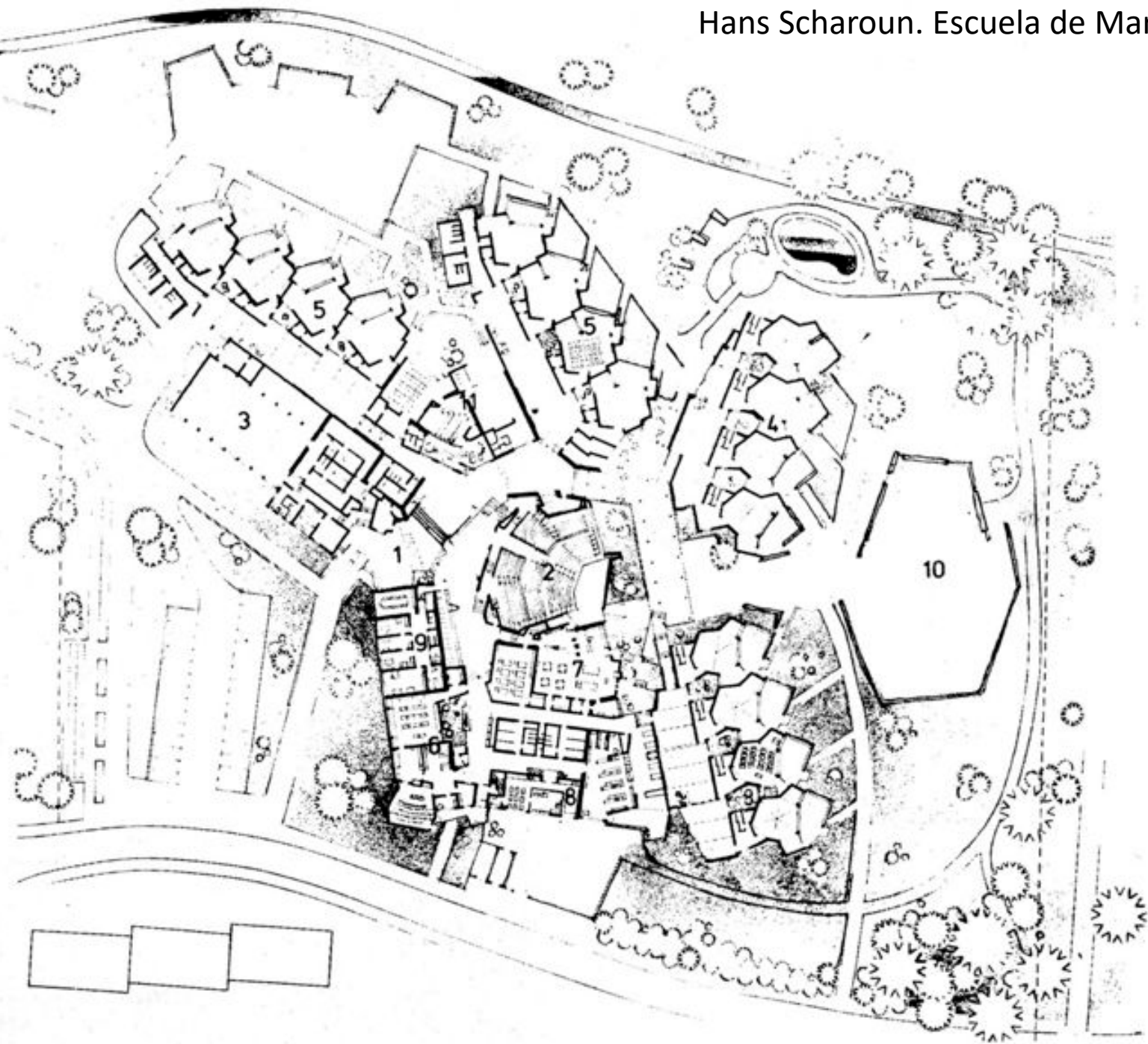


Hans Scharoun. Escuela Geschwister de Lünen. Westfalia. 1956



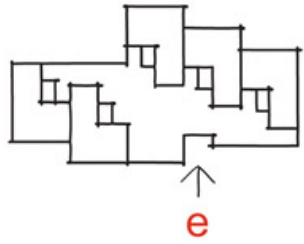


Hans Scharoun. Escuela de Marl. Westfalia. 1960

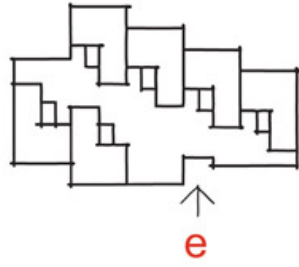




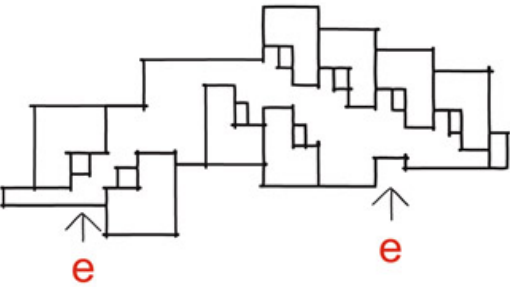
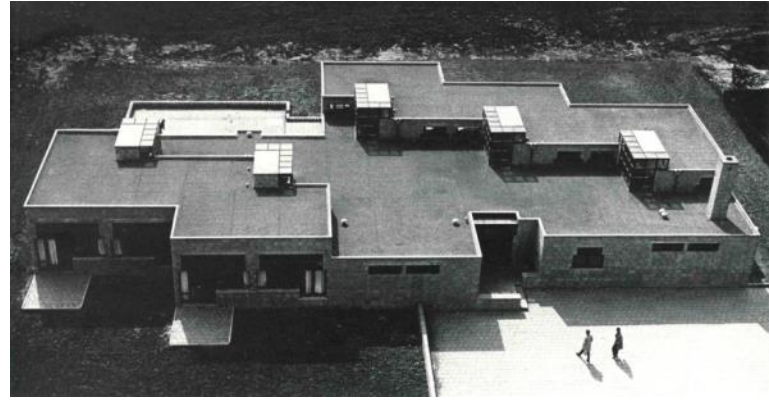
Hermann Hertzberger. Escuela  
Primaria Montessori. Delft. 1960...



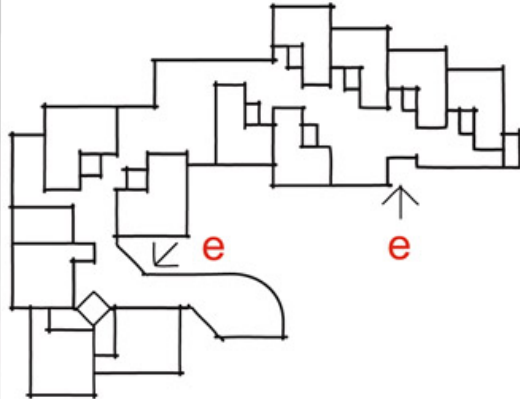
1



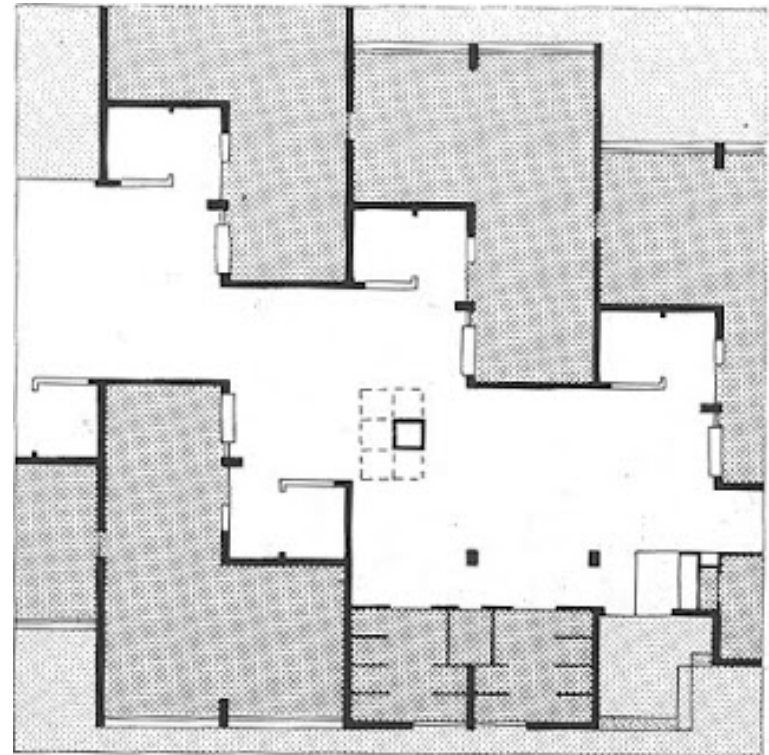
2



3



4

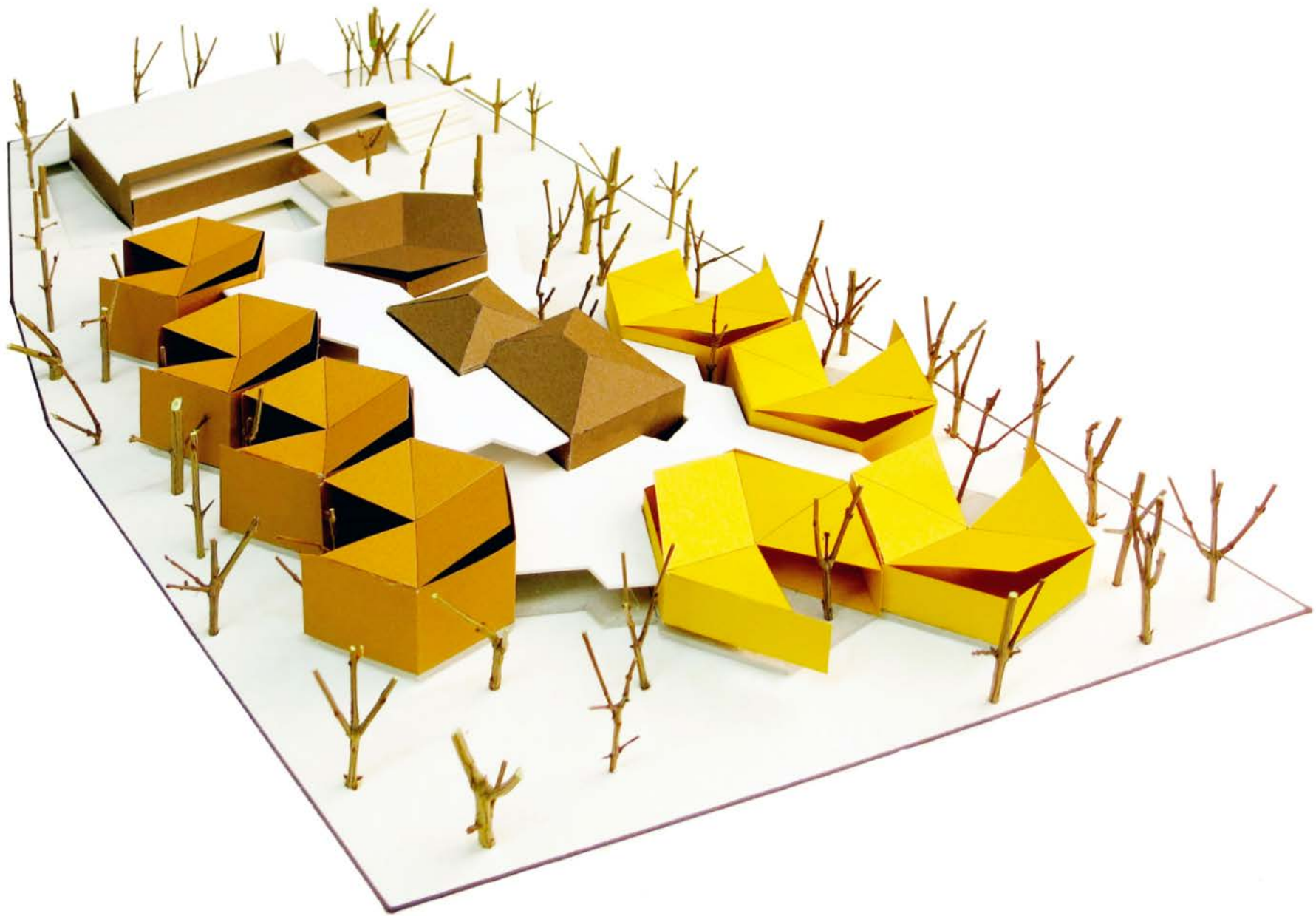


nts



[087 Hertzberger  
Delft Montessori School  
PLAN DIAGRAM / PHASED CONSTRUCTION  
25%]













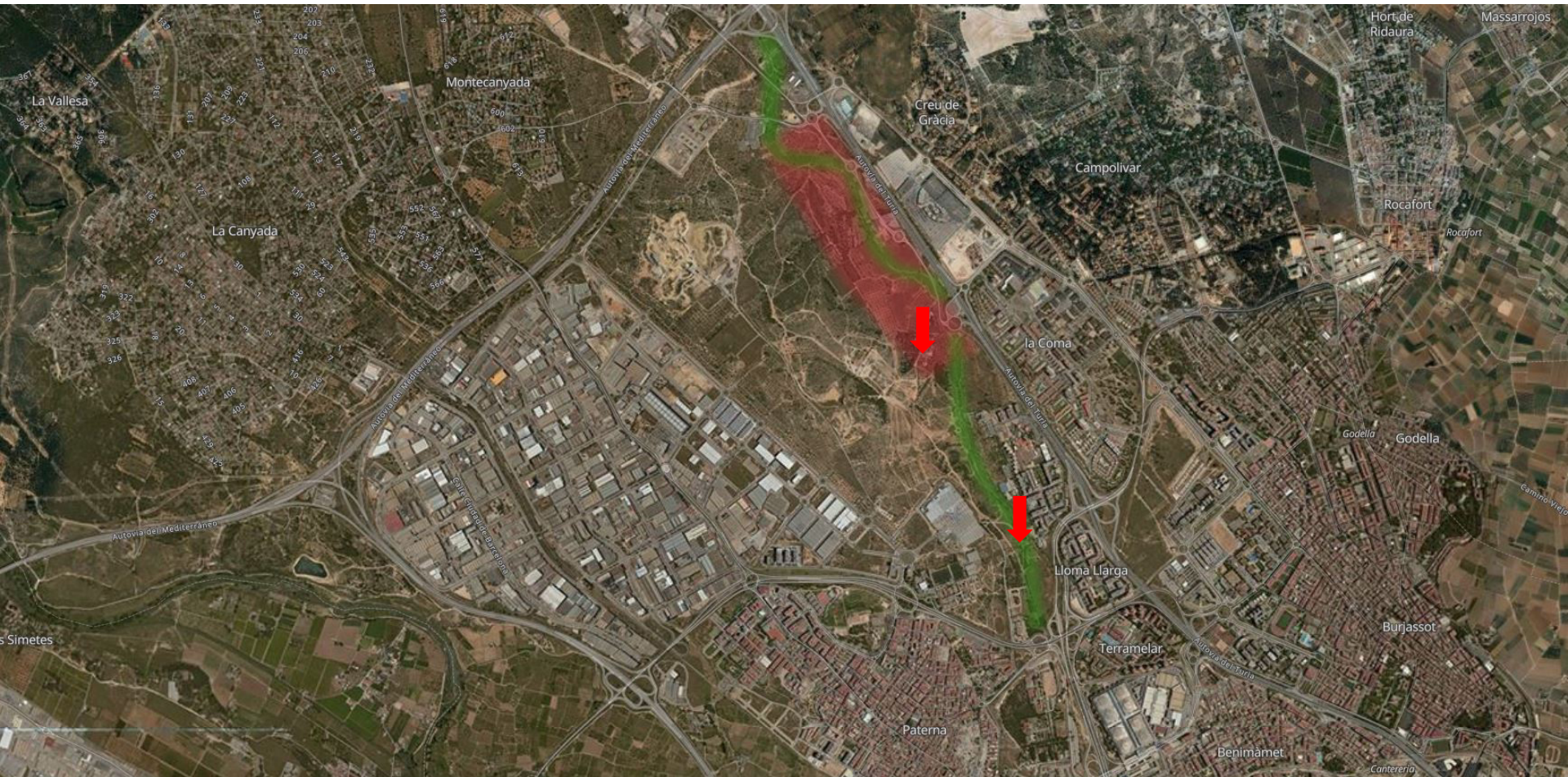


**LA PEOR PARCELA DEL MUNDO**

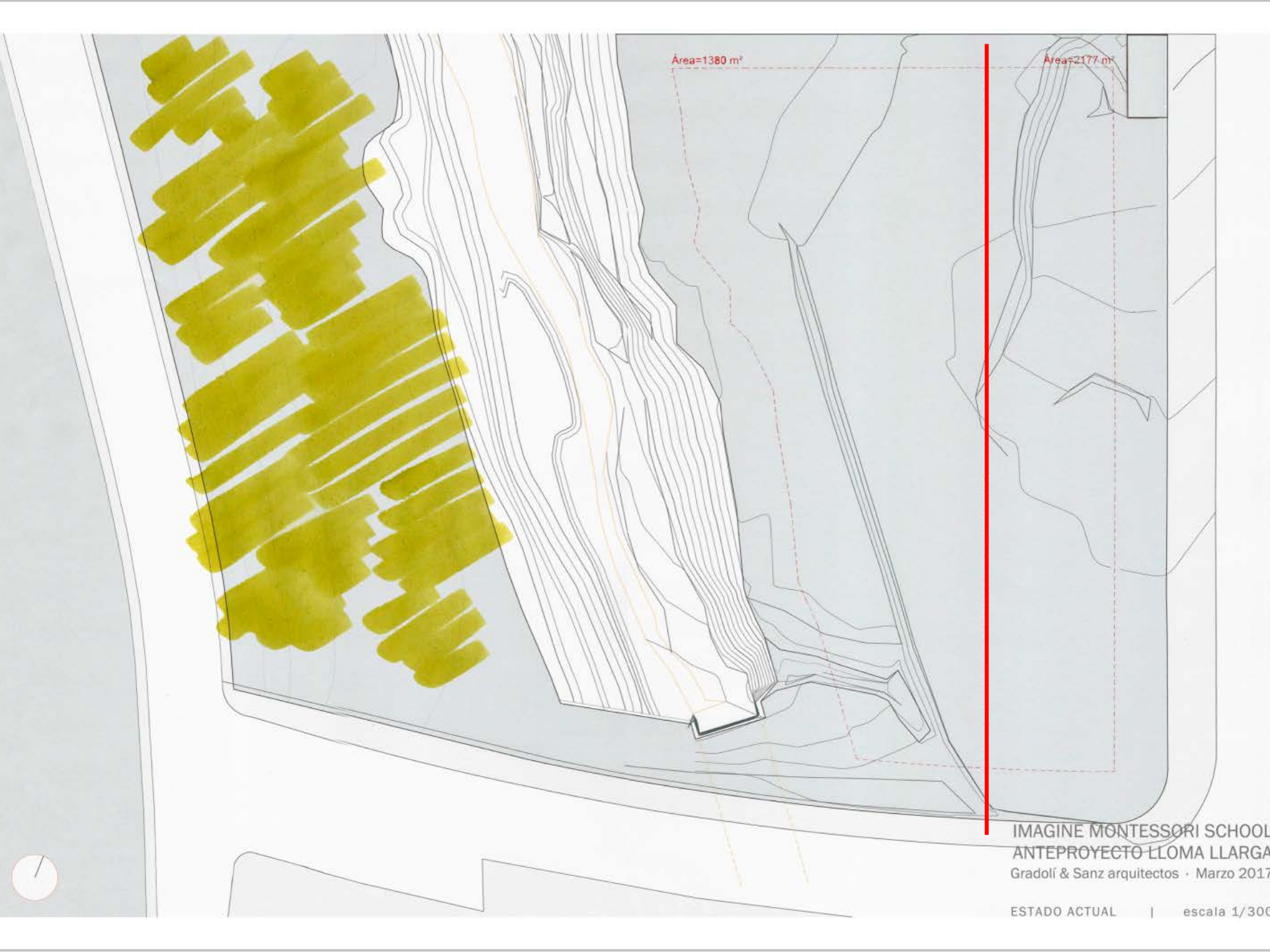












Area=1380 m<sup>2</sup>

Area=2177 m<sup>2</sup>

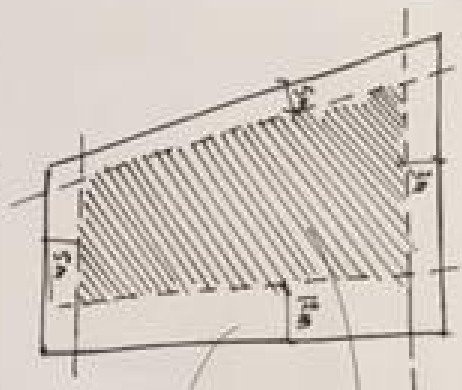
IMAGINE MONTESSORI SCHOOL  
ANTEPROYECTO LLOMA LLARGA  
Gradolí & Sanz arquitectos · Marzo 2017

ESTADO ACTUAL | escala 1/300



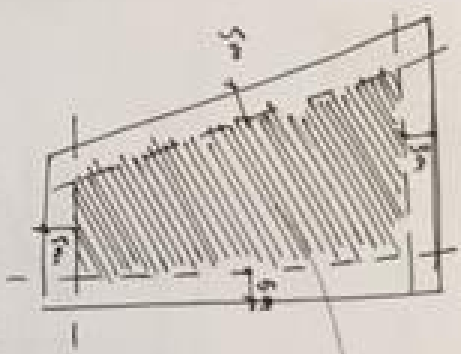


[Alimentación de perales]



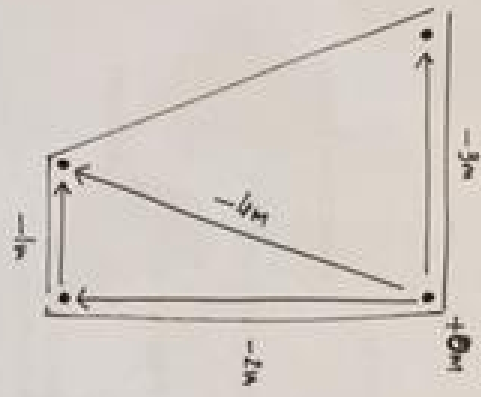
(m) con una separación de 17m (1215) Área = 1858.49 m<sup>2</sup>

[En sustitución de muros]

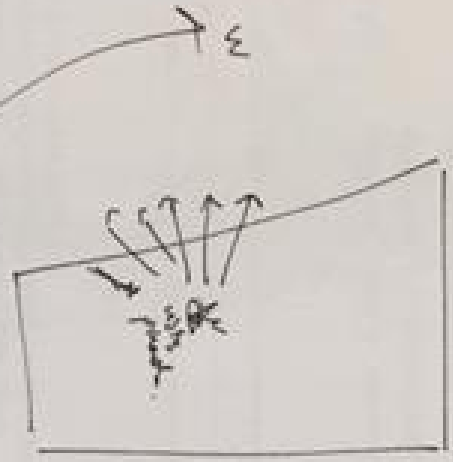


Área = 2097.4 m<sup>2</sup>

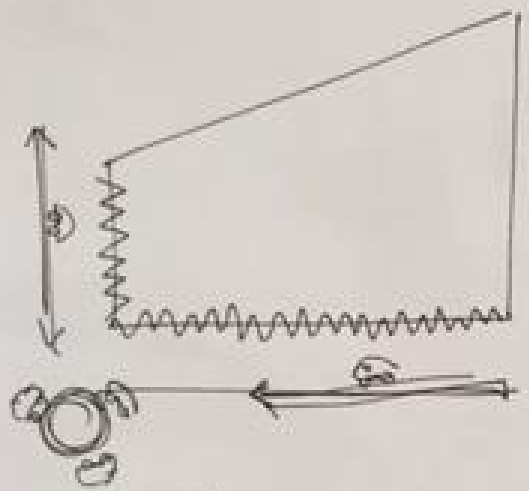
[Desmontado]



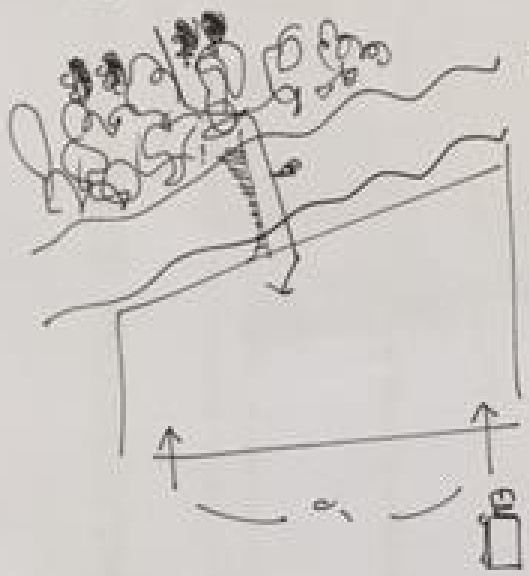
[Ornitorrino]



[Ruido / tráfico]

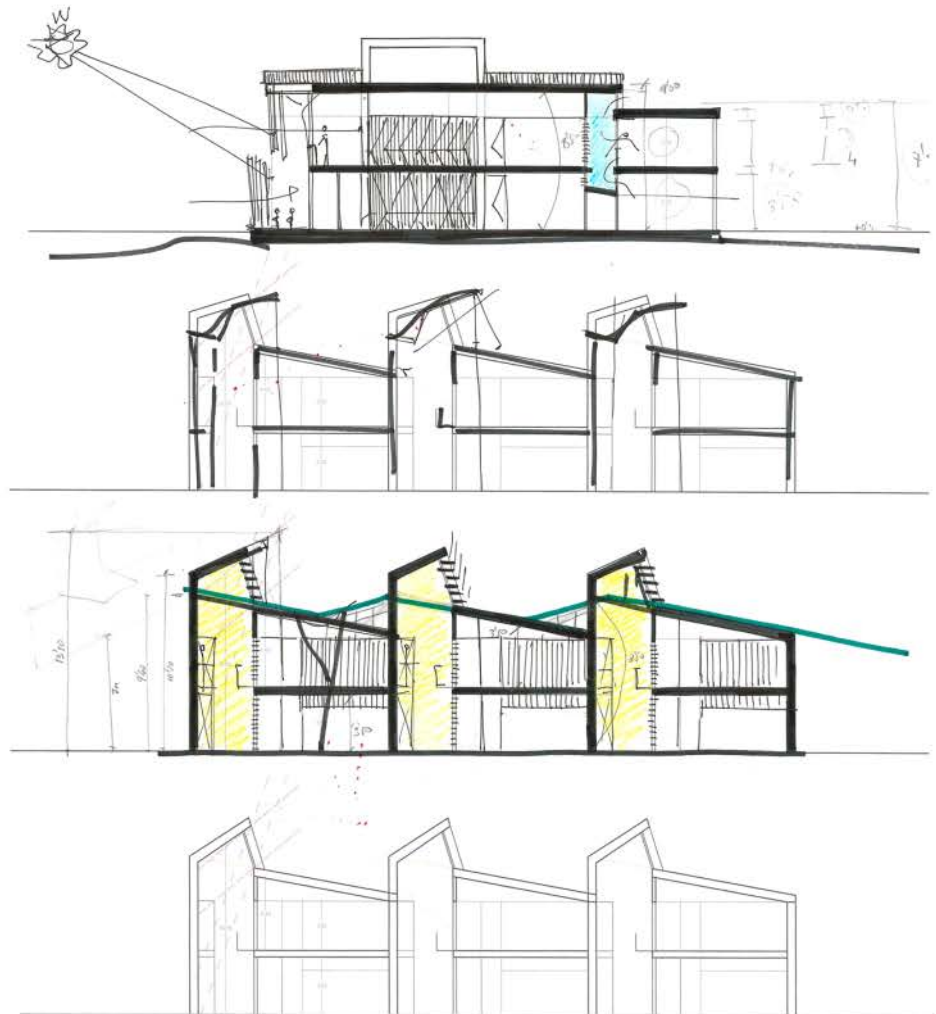


[Accesos]



CONDICIONANTES DE PARTIDA

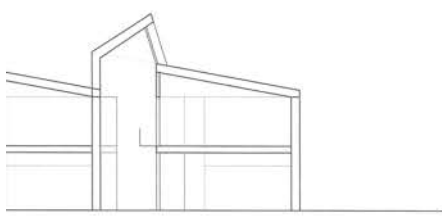
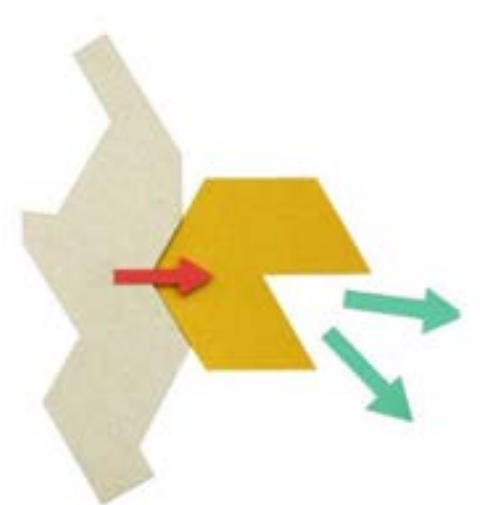
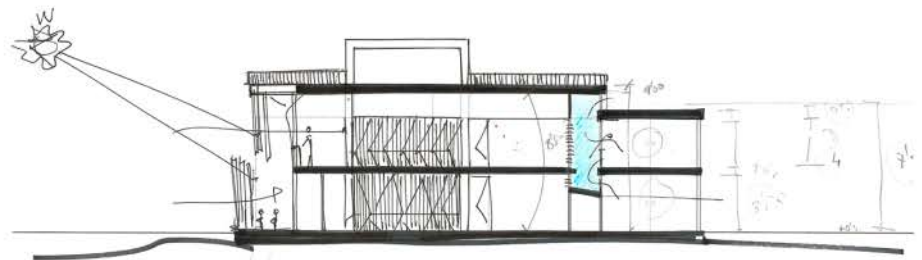




IMAGINE MONTESSORI SCHOOL  
ANTEPROYECTO LLOMA LLARGA  
Gradolí & Sanz arquitectos · Marzo 2017

PROCESO. PLANTA GENERAL Y SECCIONES

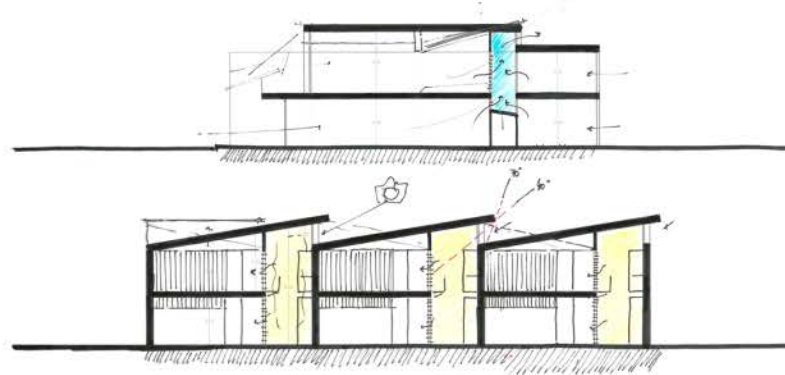
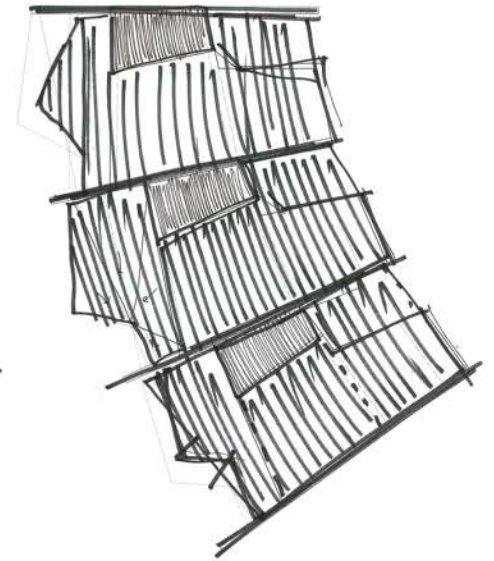
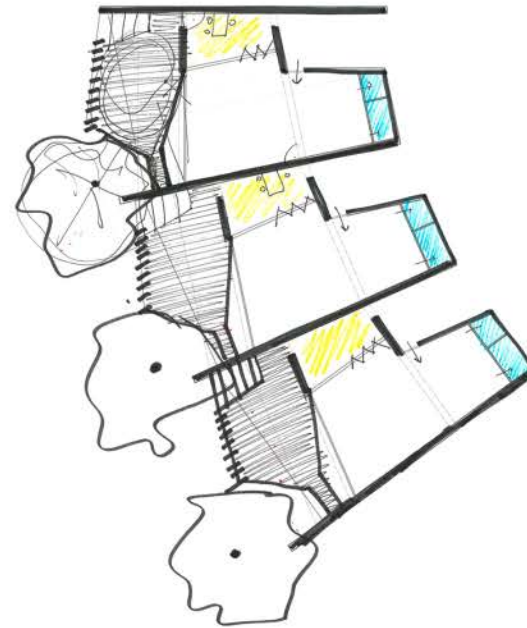
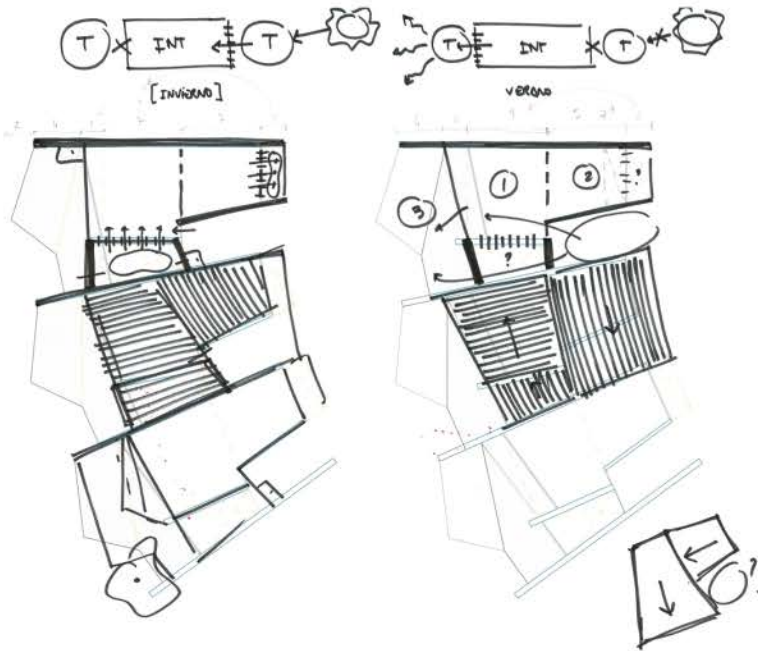




IMAGINE MONTESSORI SCHOOL  
 ANTEPROYECTO LLOMA LLARGA  
 Gradolí & Sanz arquitectos · Marzo 2017

PROCESO. PLANTA GENERAL Y SECCIONES

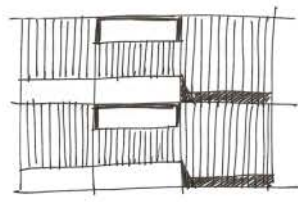
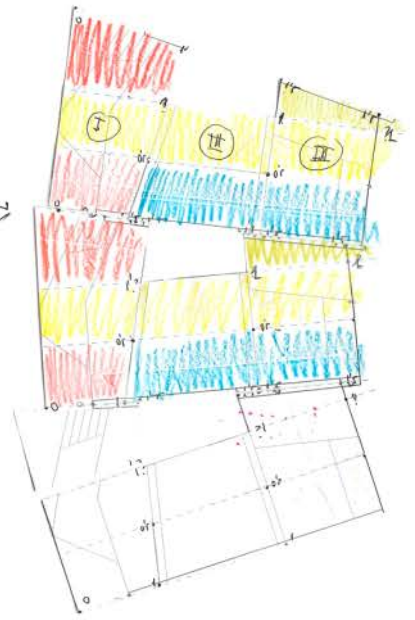
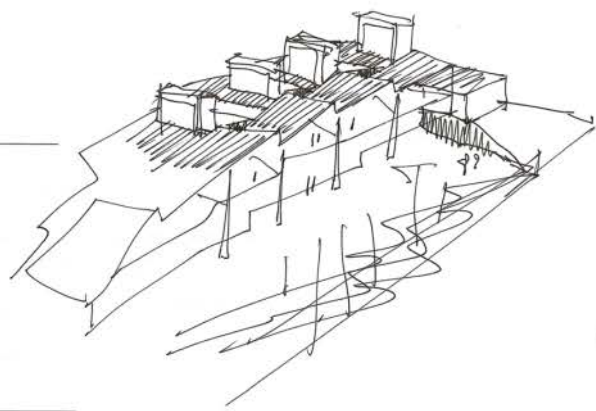
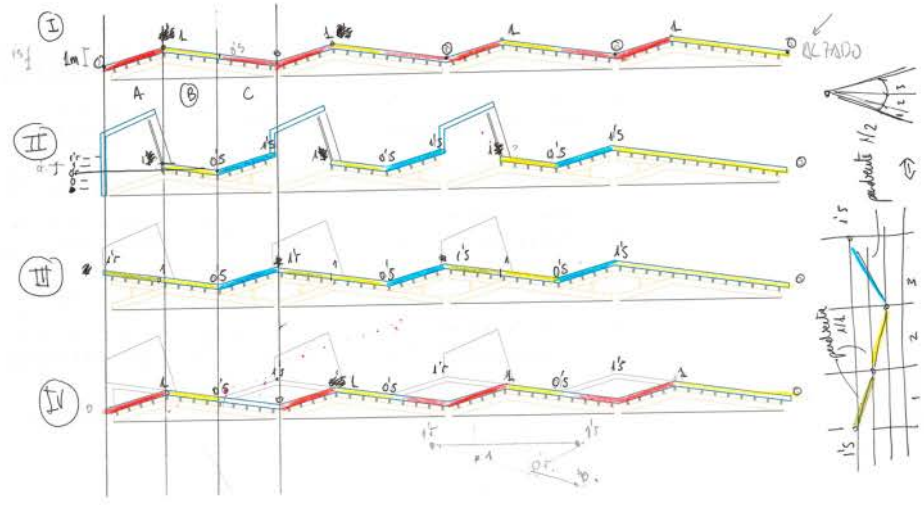
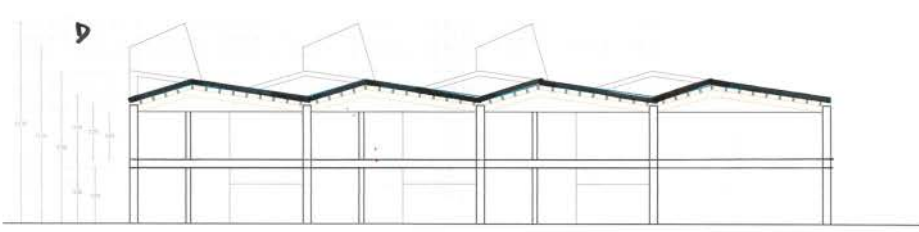
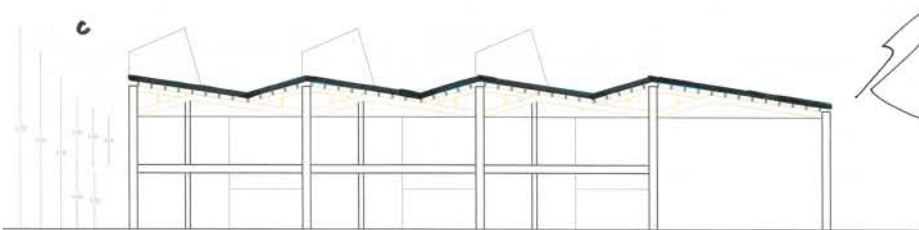
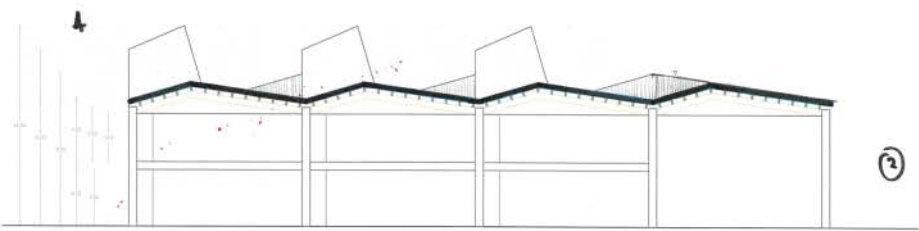
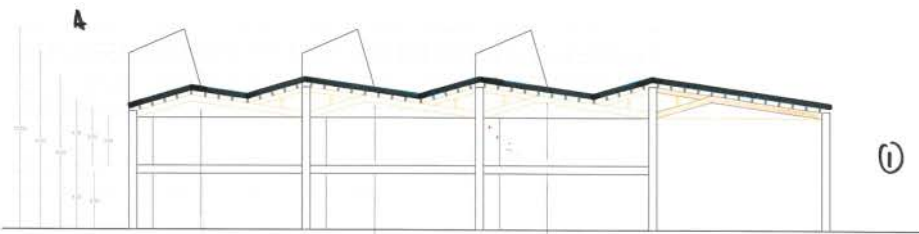




IMAGINE MONTESSORI SCHOOL  
 ANTEPROYECTO LLOMA LLARGA  
 Gradolí & Sanz arquitectos · Marzo 2017

PROCESO. ESTUDIO DEL AULA





IMAGINE MONTESSORI SCHOOL  
 ANTEPROYECTO LLOMA LLARGA  
 Gradolí & Sanz arquitectos · Marzo 2017

PROCESO. ESTUDIO DE LA CUBIERTA









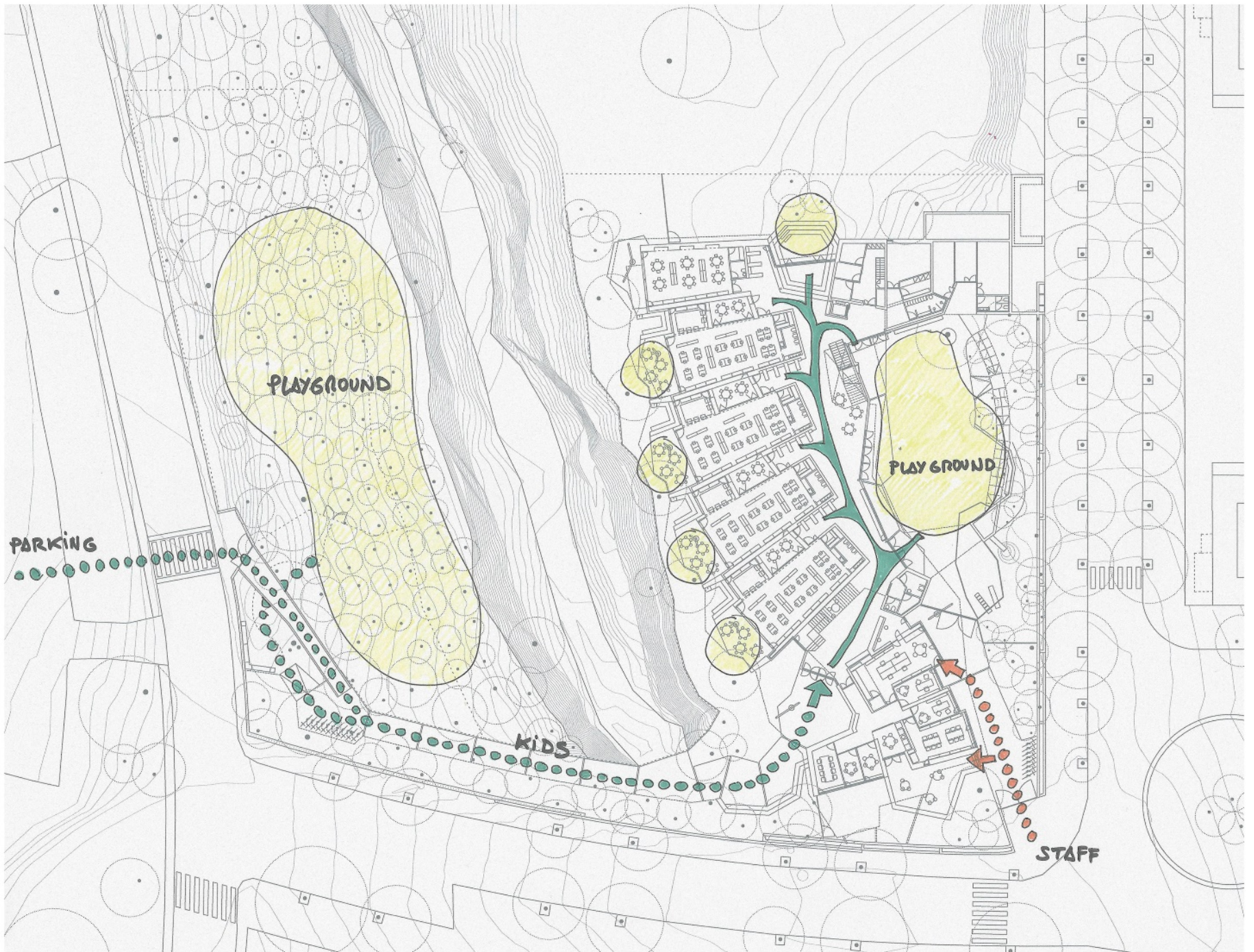








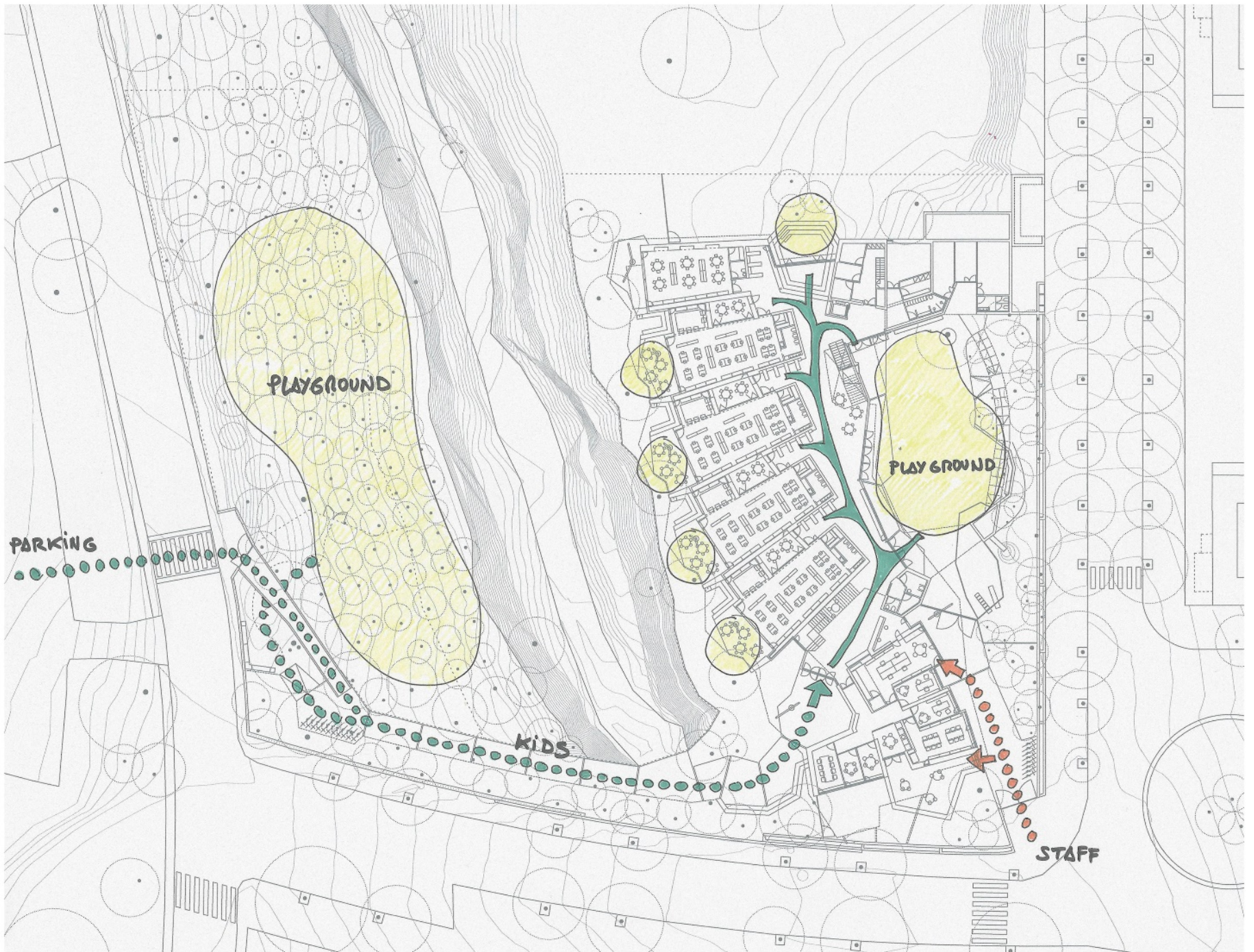




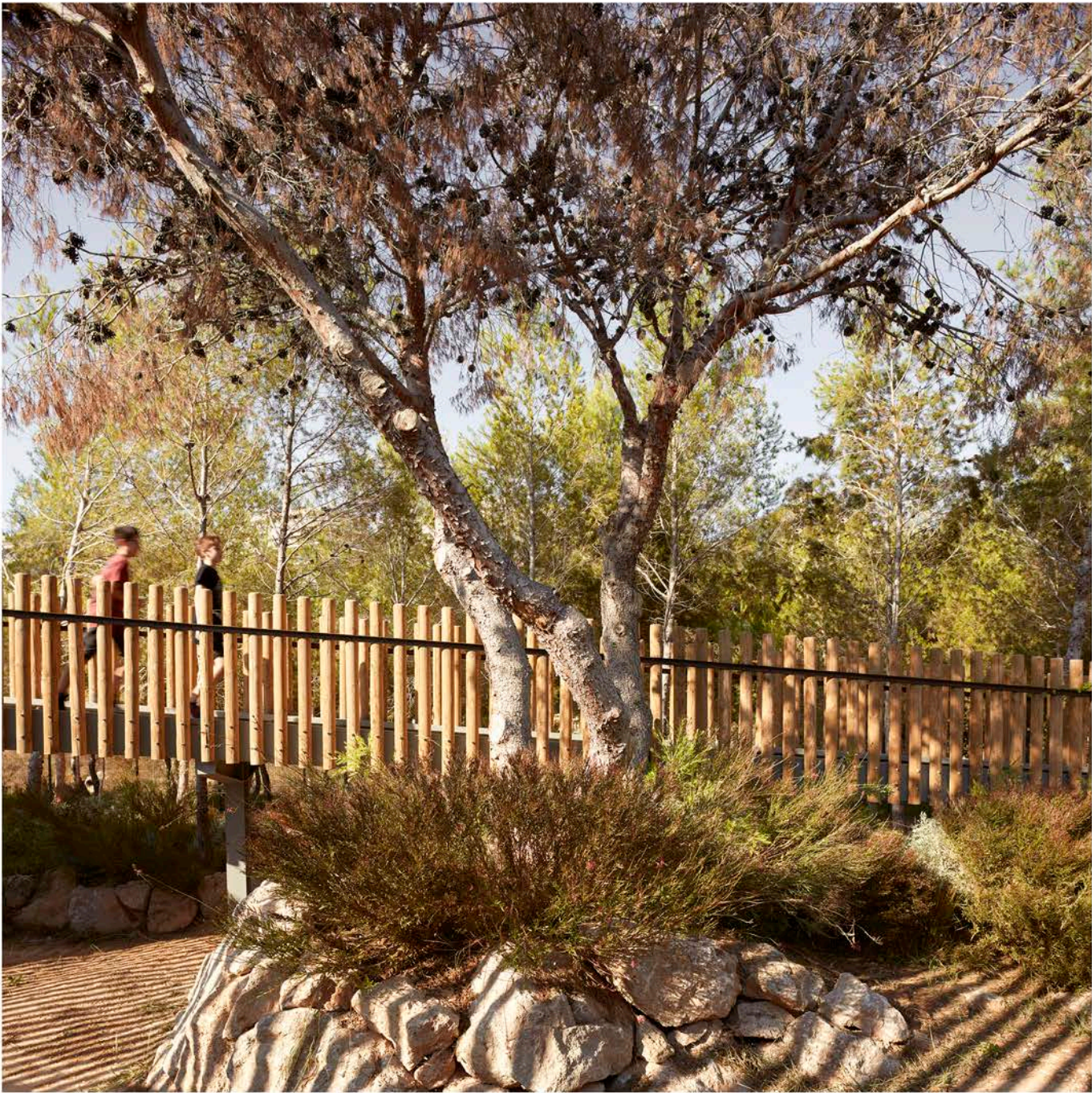




























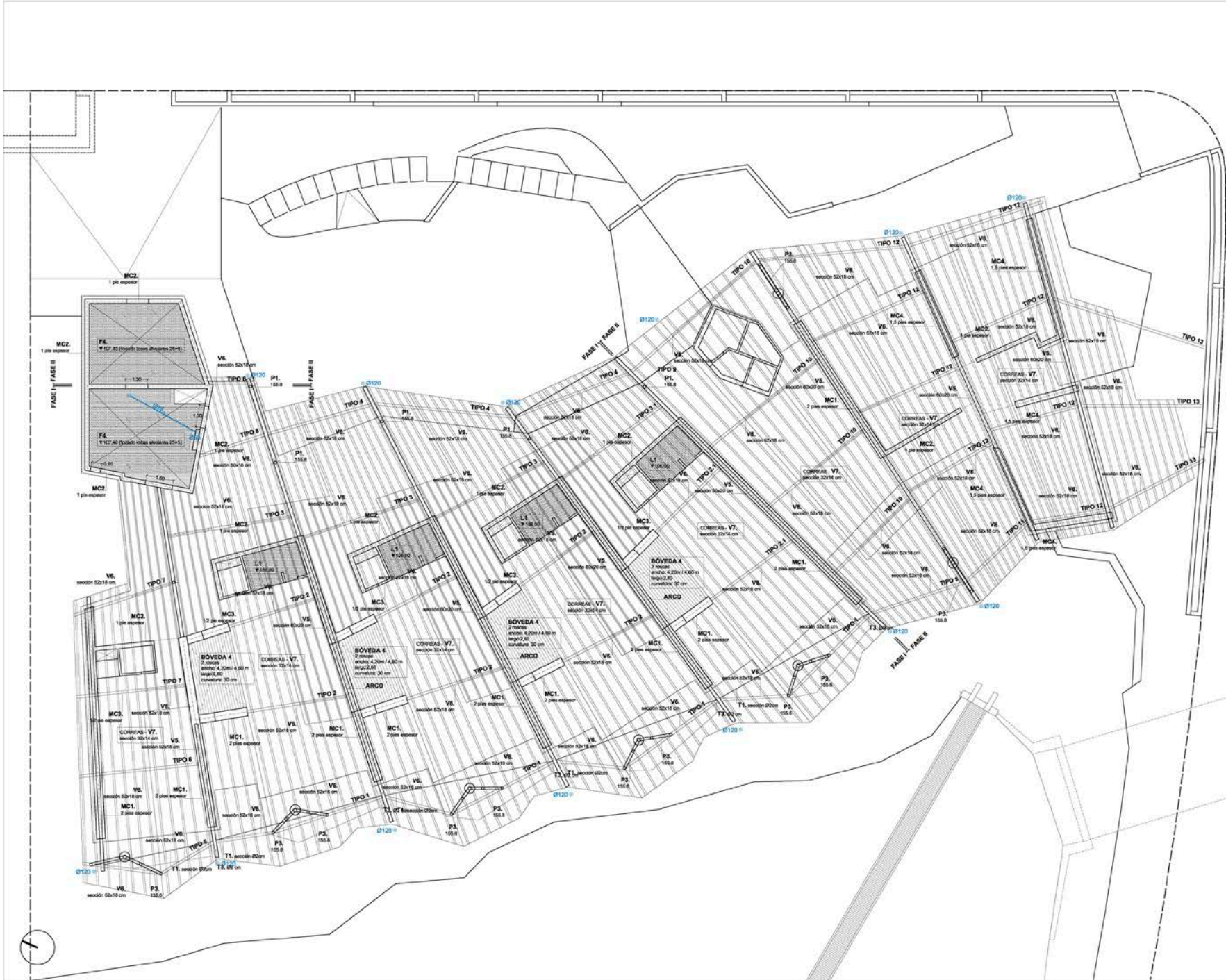




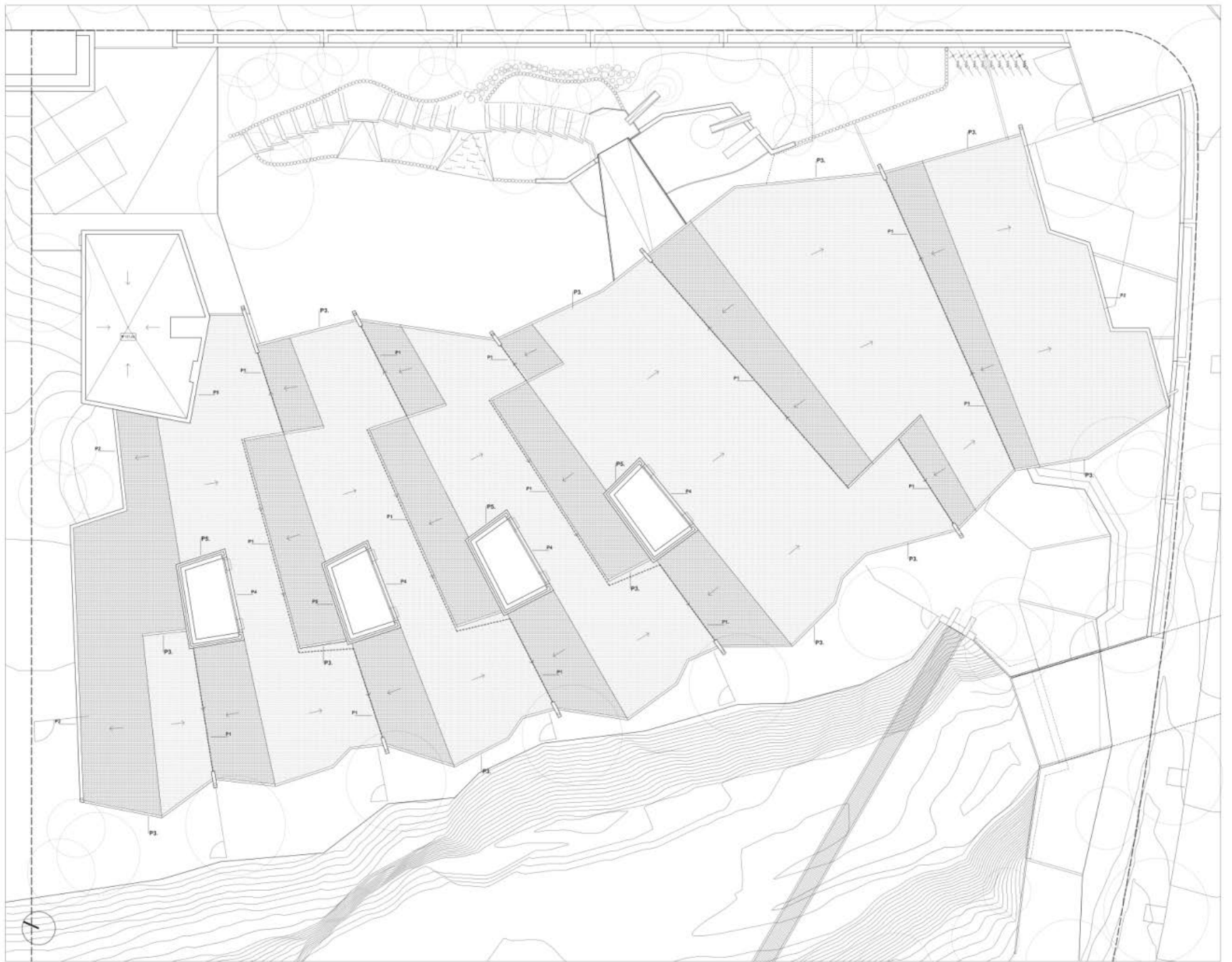




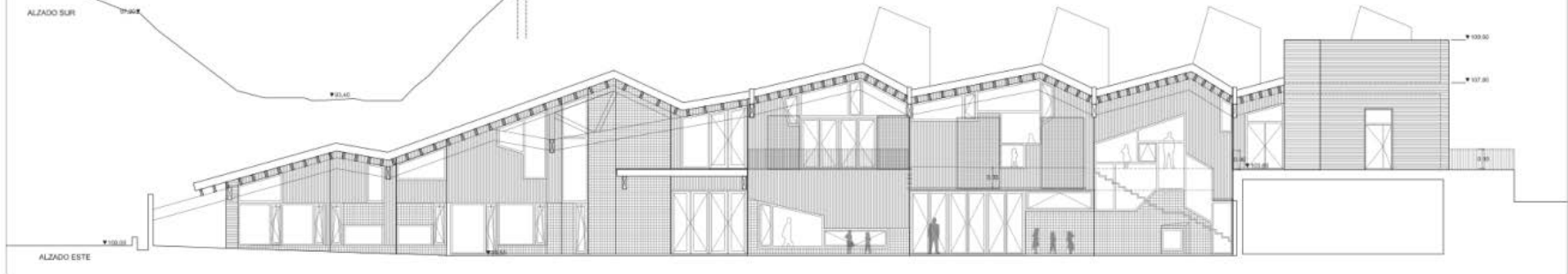
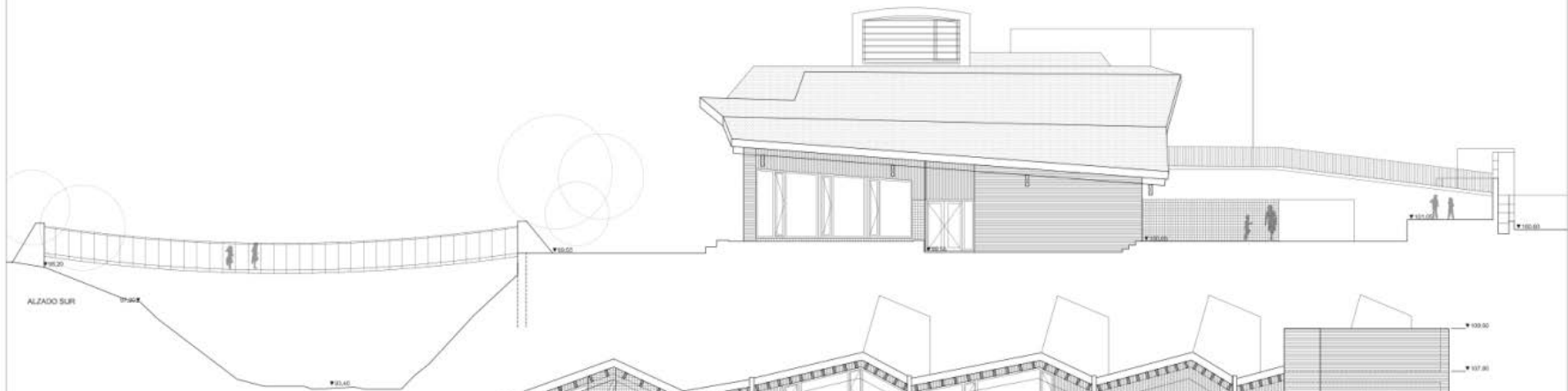
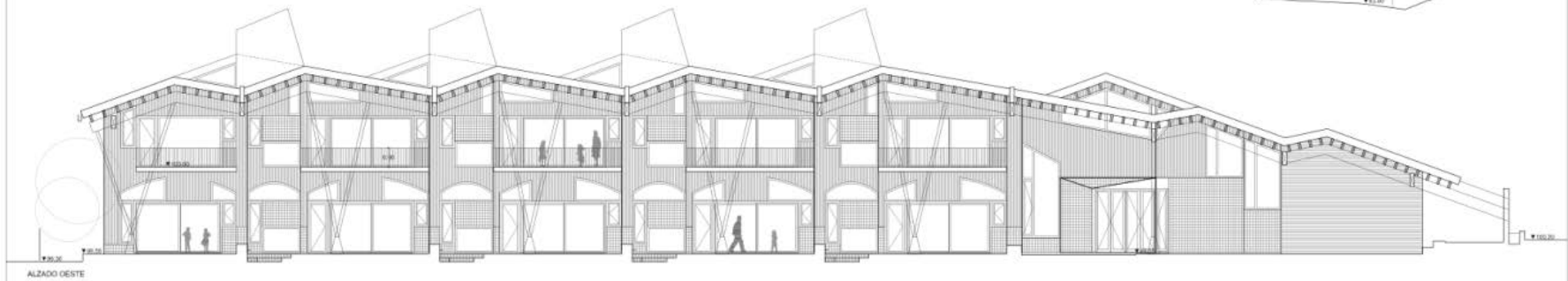














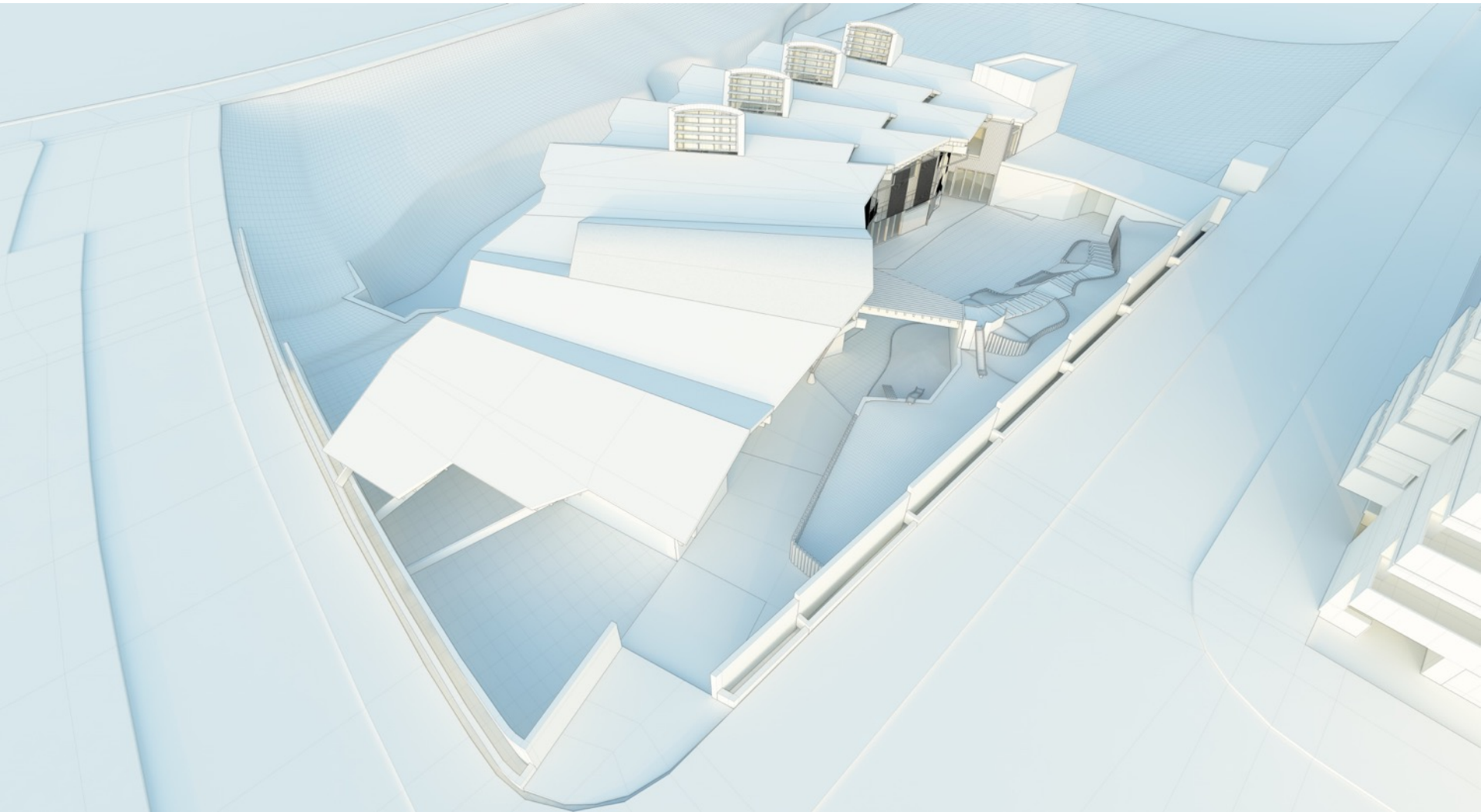




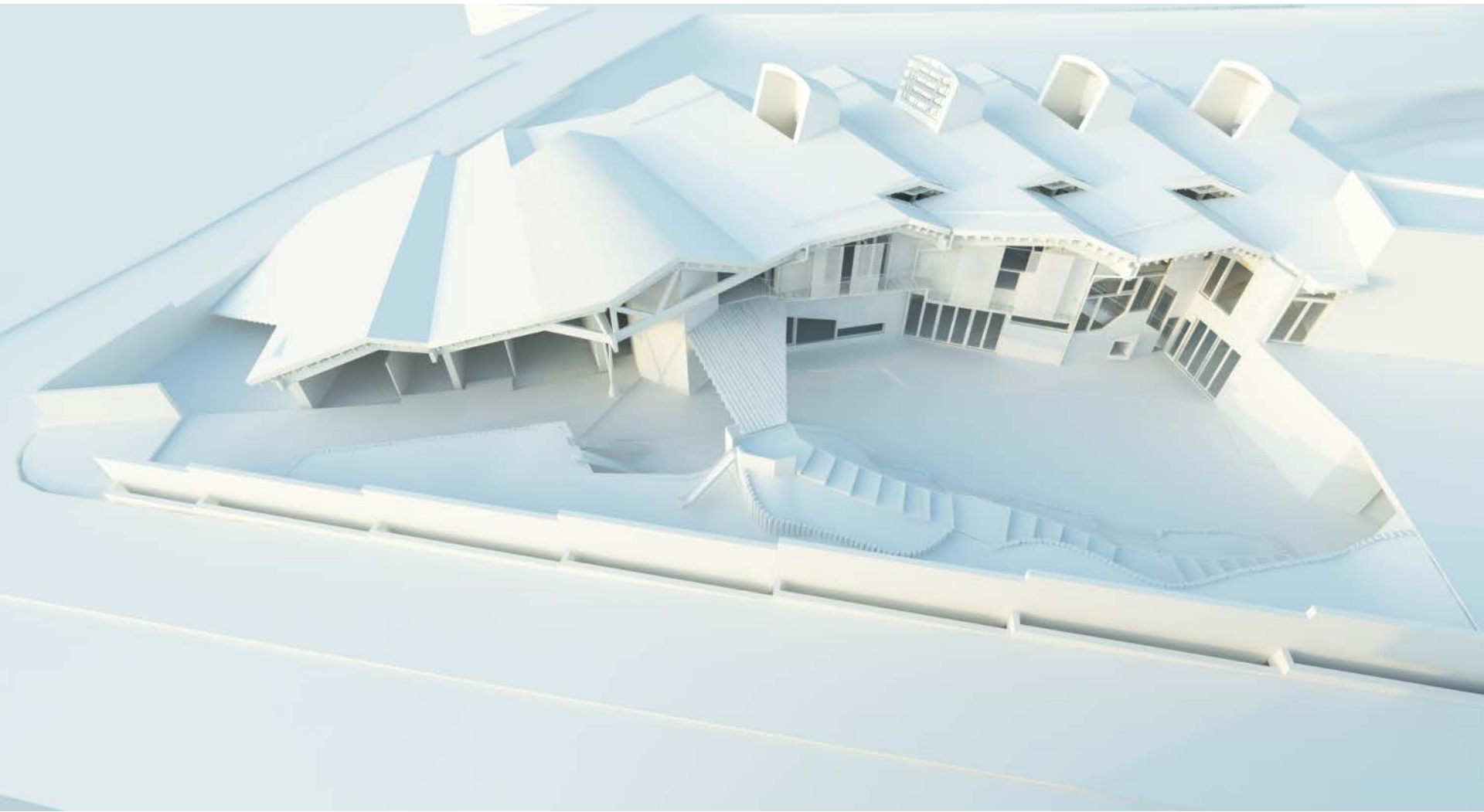


Vista de la fachada











# LA MATERIALIDAD

















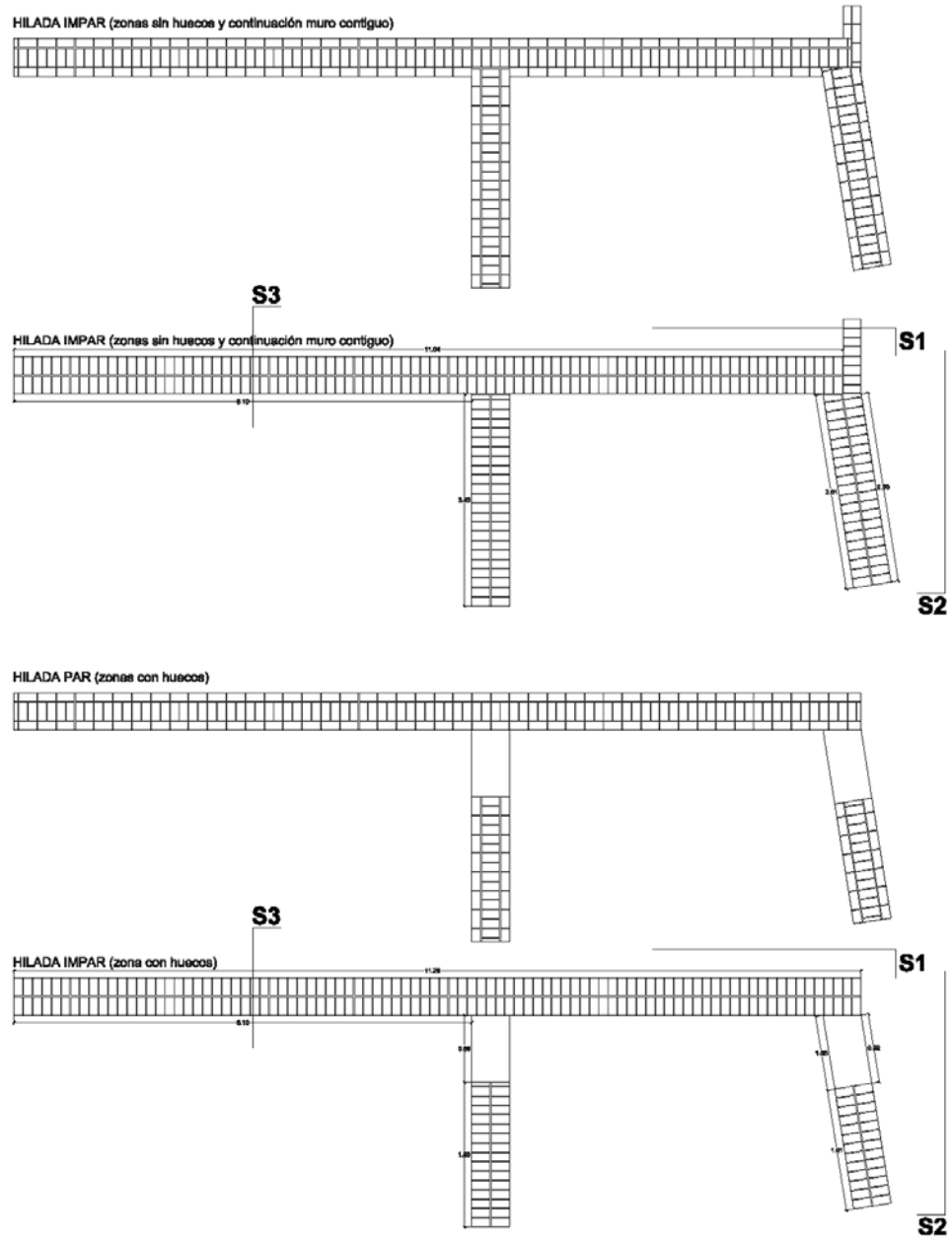






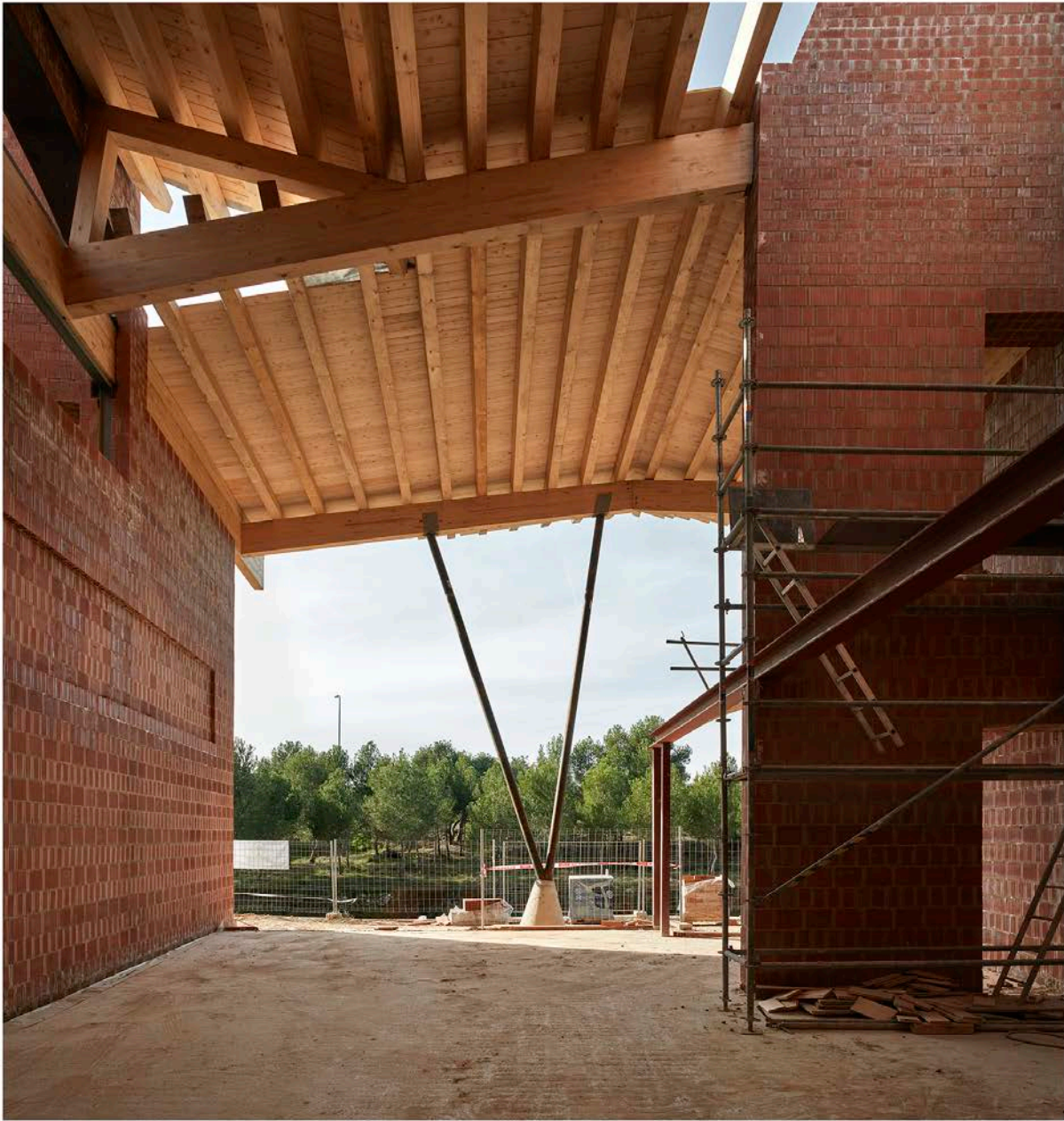




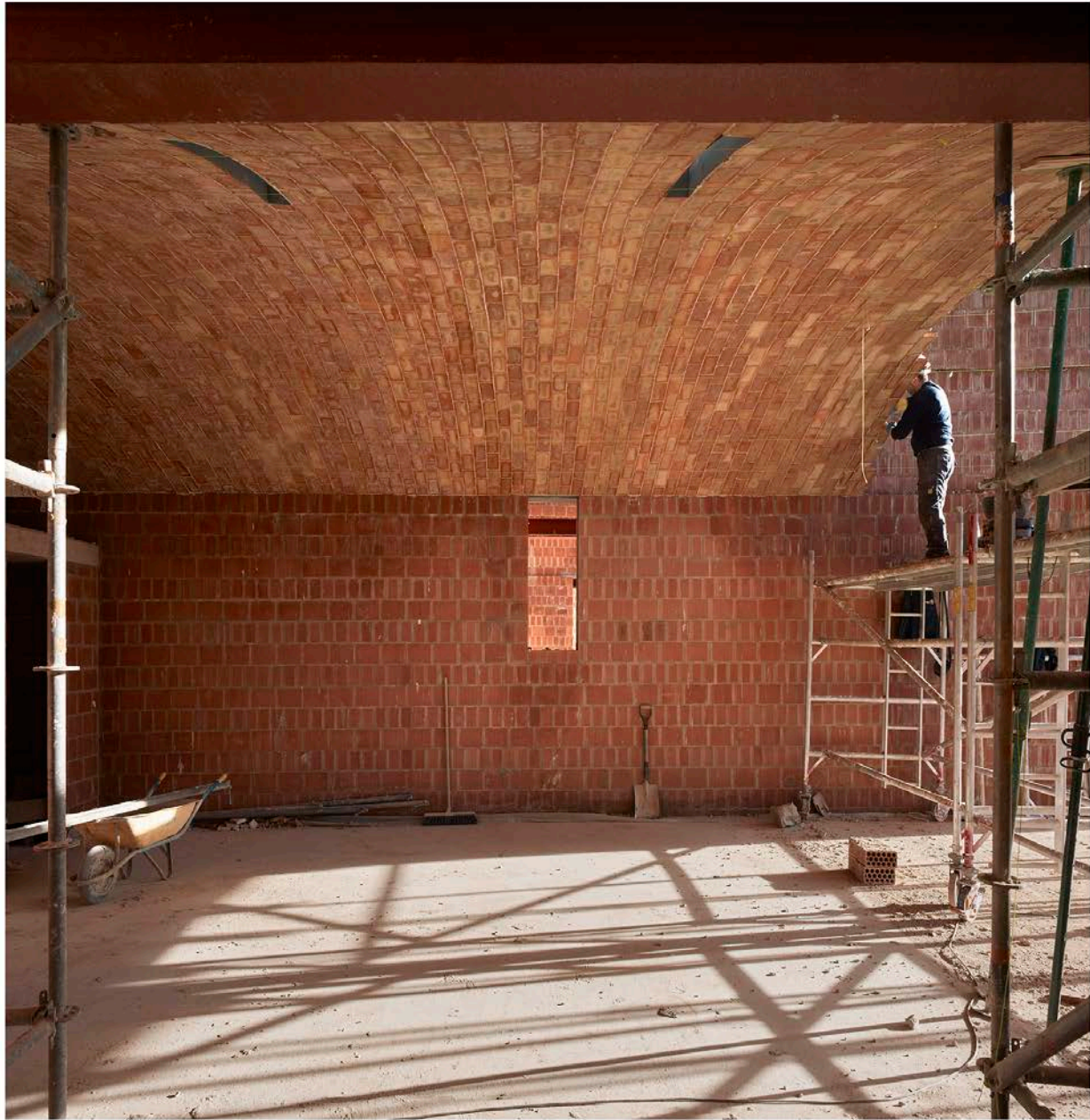


































## SEGUNDA FASE









1. vestíbulo/circulaciones
2. recepción
3. áreas comunes
4. sala reuniones principal
5. administración
6. sala reuniones/despacho 1
7. sala reuniones/despacho 2
8. sala profesores
9. oficina
10. despacho dirección
11. aula auxiliar de uso múltiple
12. comunidad infantil
13. espacio ext. de acceso
14. espacio ext. de personal
15. espacio ext. comunidad infantil
16. espacio ext. aula auxiliar

ACCESO MANTENIMIENTO PATIO      ACCESO COMUNIDAD INFANTIL calle Melissa

FASE 1 (FASE 2 SUPLENTE)

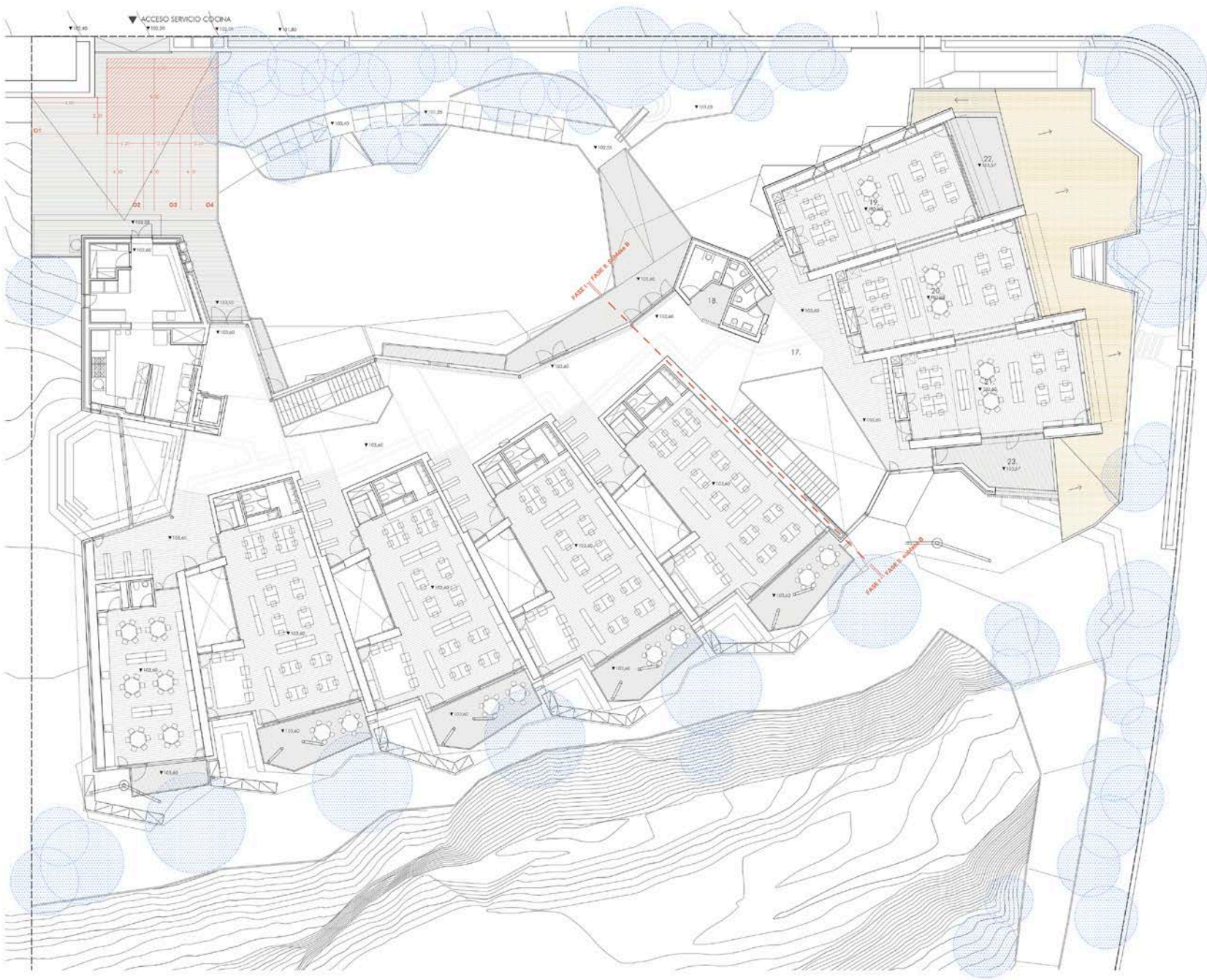
ACCESO PEATONAL PRINCIPAL

ACCESO MANSABRA calle Urmasitas

**IMAGINE MONTESSORI SCHOOL**  
 PROYECTO MODIFICADO DE AMPLIACIÓN (FASE I) - ANEXO II  
 PROYECTO BÁSICO Y DE EJECUCIÓN  
 FUENTE DE DETERMINACIÓN: PO6

Scale bar and north arrow.





- 17. circulaciones
- 18. áreas comunes
- 19. aula primaria 1
- 20. aula primaria 2
- 21. aula primaria 3
- 22. espacio exterior aula 1
- 23. espacio exterior aula 3



- 24. abltio aula primaria 1
- 25. abltio aula primaria 2
- 26. abltio aula primaria 3
- 27. superficie cubierta aprximada

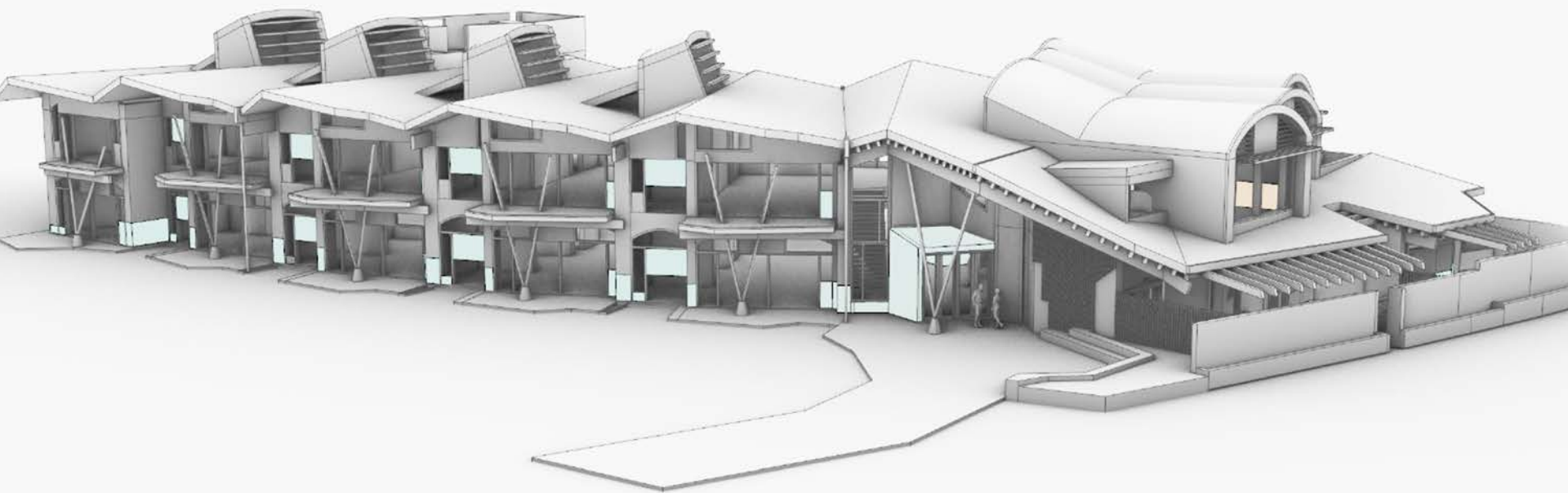


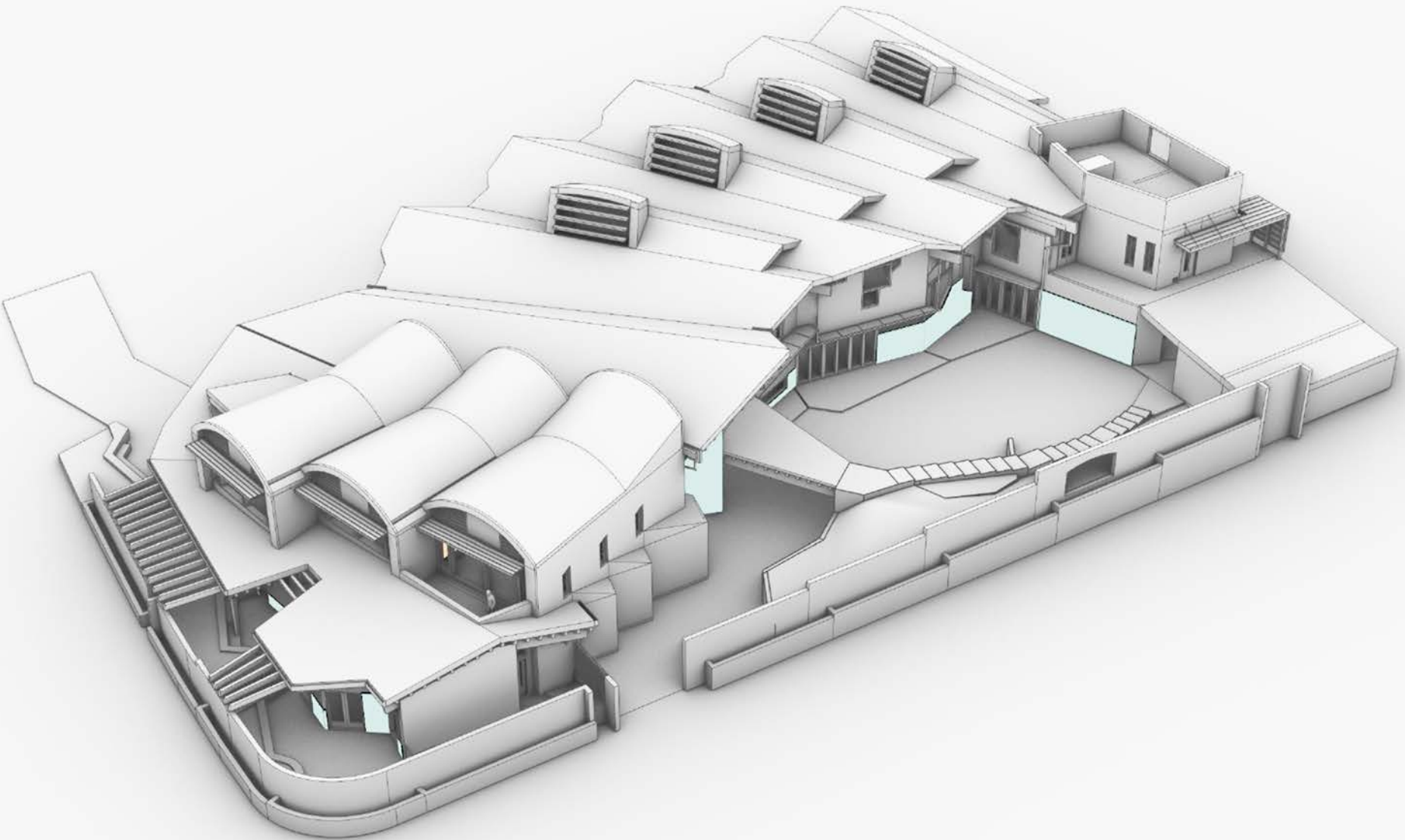
**IMAGINE MONTESSORI SCHOOL**  
 PROYECTO MODIFICADO DE AMPLIACION (FASE I, FASE II y FASE III)  
 PROYECTO BASICO Y DE SERVICIO  
 PUNTALES DE DISTRIBUCION  
 Centro de Educacion

POB  
 1:500  
 2023-2024

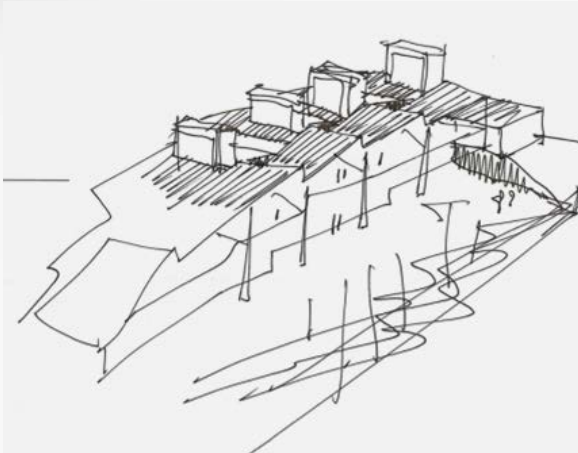
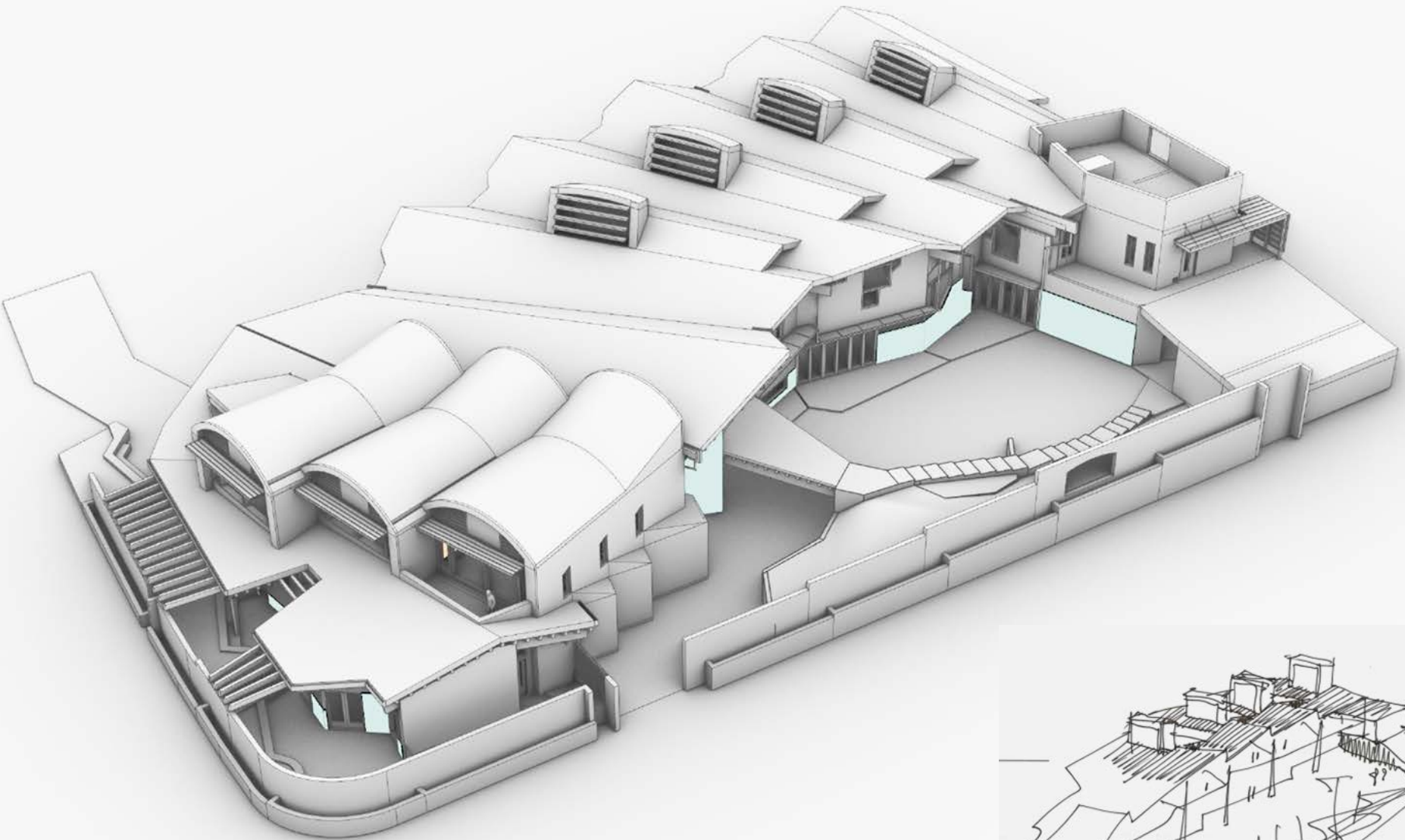
Imagina Montessori, S.A.S. 2023  
 Calle 100 No. 100-100, Medellin, Antioquia, Colombia  
 Teléfono: +57 4 765 1000  
 Email: info@imaginamontessori.com











**GRACIAS POR VUESTRA ATENCIÓN**